
WEBTRENDS®



Library On-Campus FY05 **Library On-Campus 05**

Report Range: 04/30/2004 00:00:00 - 04/30/2005 23:59:59

Prepared By:

UMFK WorkStation Systems
Univ. of Maine at Fort Kent

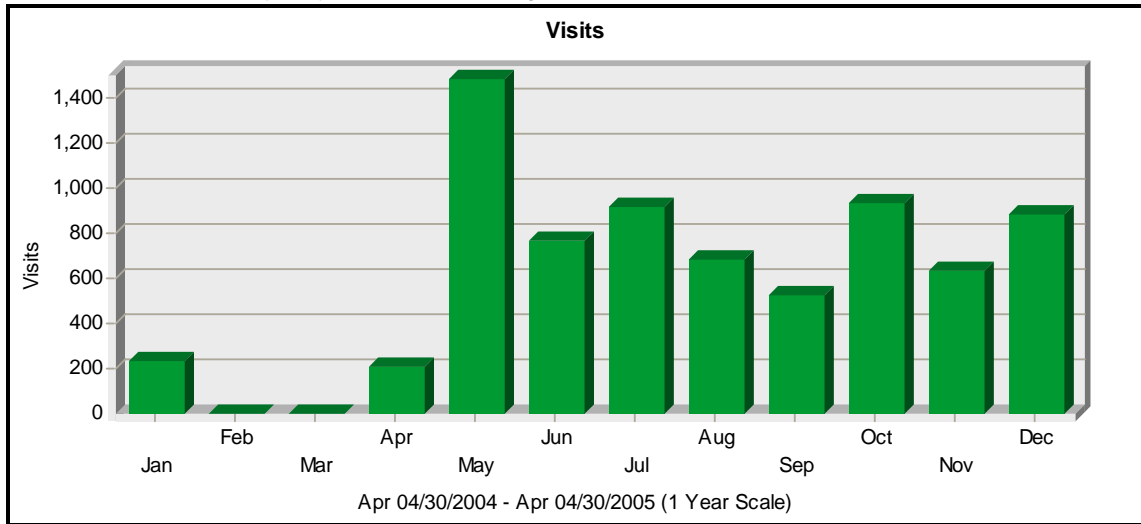
on 8/12/2005, 9:21:24

Table of Contents

General Statistics.....	3
Top Pages	5
Top Documents.....	7
Top Entry Pages	12
Top Entry Files.....	14
Top Exit Pages	16
Single Access Pages	18
Top Directories.....	20
Top Paths Through Site	22
Most Downloaded Files.....	24
Visitors by Number of Visits	25
Top Visitors	26
Most Active Cities	27
Most Active Organizations	28
Summary of Activity for Report Period	30
Activity Level by Day of the Week.....	31
Activity Level by Hour of the Day	32
Activity Level by Length of Visit.....	34
Number of Views per Visit.....	35
Visitors by Time Increment	36
Technical Statistics and Analysis	37
Top Browsers.....	38
Netscape Browsers.....	39
Microsoft Explorer Browsers	40
Top Platforms	41

General Statistics

The Visits graph displays the overall number of visits to your Web site. The General Statistics table provides an overview of the activity for your Web site during the specified time frame.



General Statistics - Report Range: 04/30/2004 00:00:00 - 04/30/2005 23:59:59		
Hits	Entire Site (Successful)	111,282
	Average per Day	304
	Home Page	18,647
Page Views	Page Views	45,442
	Average per Day	124
	Average per Unique Visitor	88
	Document Views	38,028
Visits	Visits	7,306
	Average per Day	19
	Average Visit Length	00:07:29
	Median Visit Length	00:00:53
	International Visits	0.00%
	Visits of Unknown Origin	0.00%
	Visits from United States	100.00%
	Visits Referred by Search Engines	0
	Visits from Spiders	0
Visitors	Unique Visitors	514
	Visitors Who Visited Once	90
	Visitors Who Visited More Than Once	424

General Statistics - Help Card	
? Average Hits per Day	- Number of successful hits divided by the total number of days in the log.
Average Page Views per Day	- Number of page views divided by the total number of days in the log.
Average Page Views per Unique Visitor	- Number of page views divided by the total number of unique visitors.
Average Visits per Day	- Number of visits divided by the total number of days in the log.
Average Visit Length	- Average of non-zero length visits in the log.
Document Views	- Number of hits to pages that are considered documents--not dynamic pages or forms--as defined by the system administrator.

General Statistics - Help Card

Hit - A single action on the Web server as it appears in the log file. A visitor downloading a single file is logged as a single hit, while a visitor requesting a Web page including two images registers as three hits on the server; one hit is the request for the .html page, and two additional hits are requests for the downloaded image files. While the volume of hits is an indicator of Web server traffic, it is not an accurate reflection of how many pages are being looked at.

Hits: Entire Site (Successful) - Number of hits that had a "success" status code.

Hits: Home Page - Number of times the home page (as defined in the profile) was viewed.

International Visits - Percentage of visitors defined as "international" in Domain Options.

Home Page Hits - Number of times your home page was visited.

Median Visit Length - Median of non-zero length visits in the log. Half the visit lengths are longer than the median, and half are shorter. This number is often closer to the "typical" visit length than the average visit length. Numbers that are wildly atypical can skew the average, but will not skew the median so much.

Page - Any document, dynamic page, or form. Documents are user-defined in Options, but typically include all static content, such as complete html pages. Dynamic pages are created with variables and do not exist anywhere in a static form. Forms are scripted pages which get information from a visitor and pass it back to the server.

Page Views - Hits to files designated as pages. Supporting graphics and other non-page files are not counted.

Page Views: Document Views - Hits to pages that are defined as documents. This entry excludes hits to dynamic pages and forms.

Unique Visitors - Individuals who visited your site during the report period. If someone visits more than once, they are counted only the first time they visit.

Visits - Number of times a visitor came to your site. If a visitor is idle longer than the idle-time limit, WebTrends assumes the visit was voluntarily terminated. If the visitor continues to browse your site after they reach the idle-time limit, a new visit is counted. The default idle-time limit is thirty minutes.

Visits from Spiders - Number of visits from any site classified as a spider.

Visits from Your Country - Percentage of visits from your country. The name of your country and the country code are shown. Your system administrator configures the selection for your country.

Visits of Unknown Origin - Percentage of visitors from an origin that could not be determined.

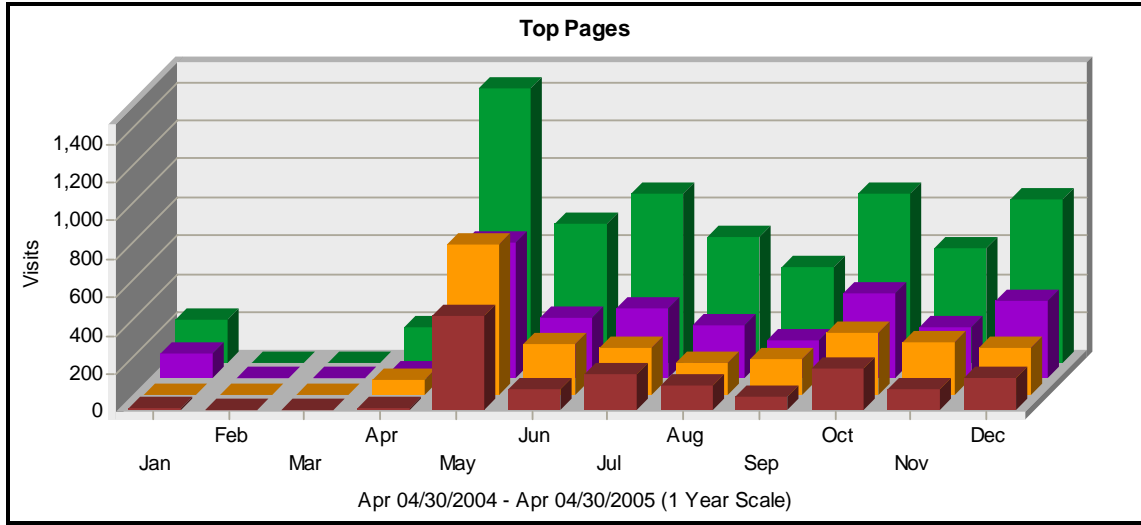
Visits Referred by Search Engines - Number of visits that began with a referral from any site classified as a search engine.

Visitors Who Visited More Than Once - Number of individual visitors who appear more than once in the log file. Individuals can be tracked by IP addresses, domain names, and cookies. Cookies provide the most accurate count.

Visitors Who Visited Once - Number of individual visitors who appear only once in the log file. Individuals can be tracked by IP addresses, domain names, and cookies. Cookies provide the most accurate count.

Top Pages

This page identifies the most popular Web pages on your site, shows you how often they were viewed, and displays the average length of time the page was viewed.



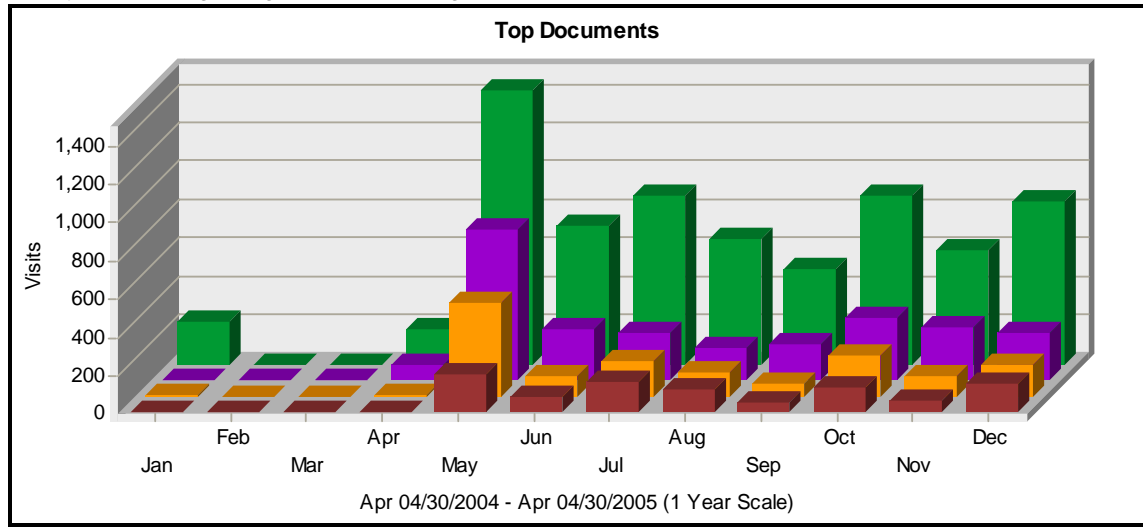
Top Pages					
	Pages	Views	% of Total Views	Visits ▼	Avg. Time Viewed
1	University of Maine at Fort Kent - Blake Library http://www.umfk.maine.edu/infoserv/library/	18,647	41.03%	7,001	00:00:17
2	http://www.umfk.maine.edu/infoserv/library/idxdb/alphalist.asp	5,124	11.27%	3,167	00:03:29
3	http://www.umfk.maine.edu/infoserv/library/research/ursus.cfm	3,914	8.61%	2,617	00:06:23
4	University of Maine at Fort Kent - Blake Library http://www.umfk.maine.edu/infoserv/library/resources/	5,038	11.08%	1,535	00:00:18
5	University of Maine at Fort Kent - Blake Library http://www.umfk.maine.edu/infoserv/library/resources/citation/default.cfm	1,148	2.52%	975	00:07:01
6	http://www.umfk.maine.edu/infoserv/library/idxdb/test.asp	1,276	2.80%	891	00:05:19
7	University of Maine at Fort Kent - Blake Library http://www.umfk.maine.edu/infoserv/library/about/services/	1,133	2.49%	441	00:00:15
8	University of Maine at Fort Kent - Blake Library http://www.umfk.maine.edu/infoserv/library/resources/serials/bysubj.asp	638	1.40%	388	00:01:44
9	University of Maine at Fort Kent - Blake Library http://www.umfk.maine.edu/infoserv/library/about/staffhrs/	699	1.53%	361	00:00:41
10	University of Maine at Fort Kent - Blake Library http://www.umfk.maine.edu/infoserv/library/s	656	1.44%	250	00:00:22

Top Pages					
	Pages	Views	% of Total Views	Visits ▼	Avg. Time Viewed
	earch/				
11	University of Maine at Fort Kent - Blake Library http://www.umfk.maine.edu/infoserv/library/vr/	546	1.20%	240	00:00:45
12	University of Maine at Fort Kent - Blake Library http://www.umfk.maine.edu/infoserv/library/forms/	548	1.20%	225	00:00:17
13	University of Maine at Fort Kent - Blake Library http://www.umfk.maine.edu/infoserv/library/resources/libcongress/default.cfm	304	0.66%	210	00:00:19
14	http://www.umfk.maine.edu/infoserv/library/resources/serials/searchsub.asp	331	0.72%	193	00:02:40
15	University of Maine at Fort Kent - Blake Library http://www.umfk.maine.edu/infoserv/library/about/	437	0.96%	175	00:00:06
16	University of Maine at Fort Kent - Blake Library http://www.umfk.maine.edu/infoserv/library/resources/tutorials/default.cfm	322	0.70%	155	00:01:00
17	University of Maine at Fort Kent - Blake Library http://www.umfk.maine.edu/infoserv/library/resources/libcongress/alpha.cfm	202	0.44%	147	00:03:02
18	University of Maine at Fort Kent - Blake Library http://www.umfk.maine.edu/infoserv/library/default.cfm	195	0.42%	140	00:01:23
19	University of Maine at Fort Kent - Blake Library http://www.umfk.maine.edu/infoserv/library/resources/evaluating/default.cfm	191	0.42%	135	00:05:15
20	http://www.umfk.maine.edu/infoserv/library/indexdb/indexes.asp	182	0.40%	119	00:03:21
Subtotal For the Page Views Above		41,531	91.39%	N/A	N/A
Total For the Log File		45,442	100%	N/A	N/A

Top Pages - Help Card
<p>? Average Time Viewed - Average length of time the specified page was viewed.</p> <p>Pages - Specific page being analyzed. If the page has a formal title, you will see the title of the page and the URL. Otherwise, you will only see the URL.</p> <p>Subtotal - Sum of all data rows for each listed page.</p> <p>Total - Sum of the subtotal and all data that does not appear on the page.</p> <p>Views - Number of times the specified page was viewed by a visitor. Each page can be viewed more than once by the same visitor, and each view is counted. If you want to ignore repeated page views by the same visitor, look in the Visits column.</p> <p>Visits - Number of visits that include a view of the specified page. Individual visitors are counted each time they come to the Web site, and are counted only once per visit no matter how many pages they look at. If a visitor is idle longer than the idle-time limit, WebTrends assumes the visit was voluntarily terminated. If the visitor continues to browse your site after they reach the idle-time limit, a new visit is counted.</p> <p>% - Percentage of visitors who viewed the specified page.</p>

Top Documents

This page identifies the most popular documents on your site, shows you how often they were viewed, and displays the average length of time the page was viewed.




Top Documents					
	Documents	Views	% of Total Views	Visits ▼	Avg. Time Viewed
1	University of Maine at Fort Kent - Blake Library http://www.umfk.maine.edu/infoserv/library/	18,647	49.03%	7,001	00:00:17
2	http://www.umfk.maine.edu/infoserv/library/research/ursus.cfm	3,914	10.29%	2,617	00:06:23
3	University of Maine at Fort Kent - Blake Library http://www.umfk.maine.edu/infoserv/library/resources/	5,038	13.24%	1,535	00:00:18
4	University of Maine at Fort Kent - Blake Library http://www.umfk.maine.edu/infoserv/library/resources/citation/default.cfm	1,148	3.01%	975	00:07:01
5	University of Maine at Fort Kent - Blake Library http://www.umfk.maine.edu/infoserv/library/about/services/	1,133	2.97%	441	00:00:15
6	University of Maine at Fort Kent - Blake Library http://www.umfk.maine.edu/infoserv/library/resources/serials/bysubj.asp	636	1.67%	386	00:01:44
7	University of Maine at Fort Kent - Blake Library http://www.umfk.maine.edu/infoserv/library/about/staffhrs/	699	1.83%	361	00:00:41
8	University of Maine at Fort Kent - Blake Library http://www.umfk.maine.edu/infoserv/library/research/	656	1.72%	250	00:00:22
9	University of Maine at Fort Kent - Blake Library http://www.umfk.maine.edu/infoserv/library/vr	546	1.43%	240	00:00:45

Top Documents					
	Documents	Views	% of Total Views	Visits ▼	Avg. Time Viewed
	/				
10	University of Maine at Fort Kent - Blake Library http://www.umfk.maine.edu/infoserv/library/forms/	547	1.43%	224	00:00:17
11	University of Maine at Fort Kent - Blake Library http://www.umfk.maine.edu/infoserv/library/resources/libcongress/default.cfm	304	0.79%	210	00:00:19
12	University of Maine at Fort Kent - Blake Library http://www.umfk.maine.edu/infoserv/library/about/	437	1.14%	175	00:00:06
13	University of Maine at Fort Kent - Blake Library http://www.umfk.maine.edu/infoserv/library/resources/tutorials/default.cfm	322	0.84%	155	00:01:00
14	University of Maine at Fort Kent - Blake Library http://www.umfk.maine.edu/infoserv/library/resources/libcongress/alpha.cfm	202	0.53%	147	00:03:02
15	University of Maine at Fort Kent - Blake Library http://www.umfk.maine.edu/infoserv/library/resources/evaluating/default.cfm	191	0.50%	135	00:05:15
16	University of Maine at Fort Kent - Blake Library http://www.umfk.maine.edu/infoserv/library/default.cfm	173	0.45%	124	00:01:24
17	University of Maine at Fort Kent - Blake Library http://www.umfk.maine.edu/infoserv/library/forms/ill/article/	281	0.73%	112	00:01:57
18	University of Maine at Fort Kent - Blake Library http://www.umfk.maine.edu/infoserv/library/help/	252	0.66%	109	00:00:11
19	University of Maine at Fort Kent - Blake Library http://www.umfk.maine.edu/infoserv/library/resources/libcongress/call.cfm	165	0.43%	97	00:03:26
20	University of Maine at Fort Kent - Blake Library http://www.umfk.maine.edu/infoserv/library/resources/videos/fkvideos.cfm	109	0.28%	89	00:01:09
21	University of Maine at Fort Kent - Blake Library http://www.umfk.maine.edu/infoserv/library/images/map/	180	0.47%	86	00:00:59
22	University of Maine at Fort Kent - Blake Library http://www.umfk.maine.edu/infoserv/library/resources/biblio/default.cfm	92	0.24%	82	00:00:27
23	University of Maine at Fort Kent - Blake Library http://www.umfk.maine.edu/infoserv/library/forms/opinion/confirm.cfm	81	0.21%	77	< 1 sec.

Top Documents					
	Documents	Views	% of Total Views	Visits ▼	Avg. Time Viewed
24	University of Maine at Fort Kent - Blake Library http://www.umfk.maine.edu/infoserv/library/resources/wwwsub/	109	0.28%	73	00:00:30
25	http://www.umfk.maine.edu/infoserv/library/research/ursus.asp	79	0.20%	60	00:05:45
26	University of Maine at Fort Kent - Blake Library http://www.umfk.maine.edu/infoserv/library/about/jobs/	72	0.18%	59	00:00:47
27	Keyword Search http://www.umfk.maine.edu/infoserv/library/resources/tutorials/clips/keyword.viewlet/keyword_viewlet_swf.html	68	0.17%	57	00:05:49
28	University of Maine at Fort Kent - Blake Library http://www.umfk.maine.edu/infoserv/library/distance/	115	0.30%	54	00:00:11
29	University of Maine at Fort Kent - Blake Library http://www.umfk.maine.edu/infoserv/library/about/services/ref/	77	0.20%	53	00:00:27
30	http://www.umfk.maine.edu/infoserv/library/research/	118	0.31%	51	00:00:04
31	University of Maine at Fort Kent - Blake Library http://www.umfk.maine.edu/infoserv/library/about/services/ill/	60	0.15%	50	00:00:34
32	University of Maine at Fort Kent - Blake Library http://www.umfk.maine.edu/infoserv/library/about/exhibit/	53	0.13%	44	00:01:21
33	Databases Part 2b http://www.umfk.maine.edu/infoserv/library/resources/tutorials/clips/datASP2b.viewlet/datASP2b_viewlet_swf.html	51	0.13%	41	00:09:43
34	University of Maine at Fort Kent - Blake Library http://www.umfk.maine.edu/infoserv/library/resources/evaluating/sample.cfm	53	0.13%	41	00:05:12
35	datASP2a http://www.umfk.maine.edu/infoserv/library/resources/tutorials/clips/datASP2a.viewlet/datASP2a_viewlet_swf.html	50	0.13%	40	00:04:46
36	University of Maine at Fort Kent - Blake Library http://www.umfk.maine.edu/infoserv/library/resources/wwwsub/default.cfm	63	0.16%	39	00:00:25
37	University of Maine at Fort Kent - Blake Library http://www.umfk.maine.edu/infoserv/library/forms/ill/book/	83	0.21%	38	00:01:10
38	University of Maine at Fort Kent - Blake Library http://www.umfk.maine.edu/infoserv/library/about/services/circ/	36	0.09%	35	00:00:32
39	databases Part 1	45	0.11%	33	00:05:21

Top Documents					
	Documents	Views	% of Total Views	Visits ▼	Avg. Time Viewed
	http://www.umfk.maine.edu/infoserv/library/resources/tutorials/clips/databases1.viewlet/databases1_viewlet_swf.html				
40	patron record http://www.umfk.maine.edu/infoserv/library/resources/tutorials/clips/patronrecord.viewlet/patronrecord_viewlet_swf.html	33	0.08%	32	00:05:19
41	University of Maine at Fort Kent - Blake Library http://www.umfk.maine.edu/infoserv/library/about/services/reserves/	38	0.09%	32	00:00:19
42	maine_info_net http://www.umfk.maine.edu/infoserv/library/resources/tutorials/clips/maine_info_net.viewlet/maine_info_net_viewlet_swf.html	37	0.09%	31	00:04:48
43	University of Maine at Fort Kent - Blake Library http://www.umfk.maine.edu/infoserv/library/distance/online/	34	0.08%	29	00:00:59
44	University of Maine at Fort Kent - Blake Library http://www.umfk.maine.edu/infoserv/library/search/default.cfm	33	0.08%	28	00:00:32
45	requesting http://www.umfk.maine.edu/infoserv/library/resources/tutorials/clips/requesting.viewlet/requesting_viewlet_swf.html	28	0.07%	27	00:04:04
46	University of Maine at Fort Kent - Blake Library http://www.umfk.maine.edu/infoserv/library/about/collections/	40	0.10%	18	00:00:08
47	Internal Library Staff documentation http://www.umfk.maine.edu/infoserv/library/staffdocs/main.htm	20	0.05%	18	00:00:02
48	University of Maine at Fort Kent - Blake Library http://www.umfk.maine.edu/infoserv/library/forms/suggest/	40	0.10%	18	00:00:06
49	University of Maine at Fort Kent - Blake Library http://www.umfk.maine.edu/infoserv/library/help/tools/	18	0.04%	18	00:02:01
50	reserves http://www.umfk.maine.edu/infoserv/library/resources/tutorials/clips/reserves.viewlet/reserves_viewlet_swf.html	17	0.04%	17	00:05:14
Subtotal For the Page Views Above		37,223	97.88%	N/A	N/A
Total For the Log File		38,028	100%	N/A	N/A

Top Documents - Help Card	
	Average Time Viewed - Average length of time the specified page was viewed.
<p>Documents - Specific document being analyzed. Documents are pages that were defined as "documents" in Options. Typically, pages are defined as a document if the content is static, such as complete HTML pages. However, you can define dynamic pages and forms as documents if you choose.</p>	

Top Documents - Help Card


Subtotal - Sum of all data rows for each listed page.

Total - Sum of the subtotal and all data that does not appear on the page.

Views - Number of times the specified document was viewed by a visitor. Each document can be viewed more than once by the same visitor, and each view is counted. If you want to ignore repeated document views by the same visitor, look in the Visits column.

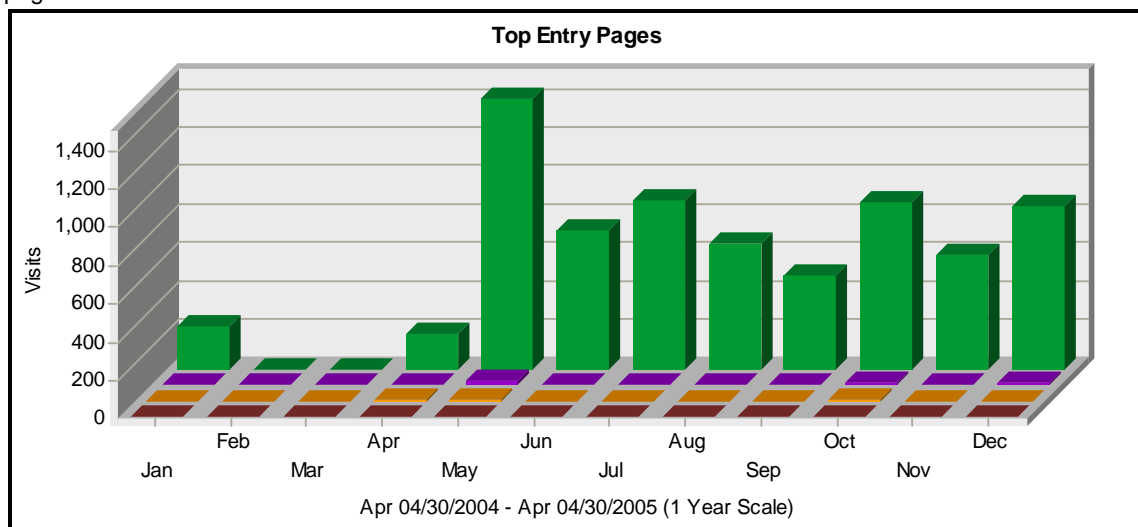
Visits - Number of visits that include a view of the specified document. Individual visitors are counted each time they come to the Web site, and are counted only once per visit no matter how many pages they look at. If a visitor is idle longer than the idle-time limit, WebTrends assumes the visit was voluntarily terminated. If the visitor continues to browse your site after they reach the idle-time limit, a new visit is counted.

% - Percentage of visitors who viewed this document.

 Pages with good content and design are more likely to attract visitors and be revisited. Less popular pages on a site can be made more appealing by improving the content or incorporating design elements similar to that on the more important pages. Always remember that people are far more interested in content than in design, and average view times can help determine which content is most important to your visitors.

Top Entry Pages


This page identifies the first page viewed when a visitor visits your site. The most common entry page is usually the home page, but other common entry pages include specific URLs that go directly to a particular page.



Top Entry Pages			
	Page	% of Total	Visits
1	University of Maine at Fort Kent - Blake Library http://www.umfk.maine.edu/infoserv/library/	95.33%	6,945
2	http://www.umfk.maine.edu/infoserv/library/indxdb/alphalist.asp	1.05%	77
3	http://www.umfk.maine.edu/infoserv/library/research/ursus.cfm	0.79%	58
4	University of Maine at Fort Kent - Blake Library http://www.umfk.maine.edu/infoserv/library/resources/	0.39%	29
5	University of Maine at Fort Kent - Blake Library http://www.umfk.maine.edu/infoserv/library/resources/citation/default.cfm	0.32%	24
6	University of Maine at Fort Kent - Blake Library http://www.umfk.maine.edu/infoserv/library/resources/tutorials/default.cfm	0.30%	22
7	Internal Library Staff documentation http://www.umfk.maine.edu/infoserv/library/staffdocs/main.htm	0.19%	14
8	http://www.umfk.maine.edu/infoserv/library/indxdb/test.asp	0.16%	12
9	University of Maine at Fort Kent - Blake Library http://www.umfk.maine.edu/infoserv/library/about/staffhrs/	0.16%	12
10	University of Maine at Fort Kent - Blake Library http://www.umfk.maine.edu/infoserv/library/distance/online/	0.13%	10
11	http://www.umfk.maine.edu/infoserv/library/indxdb/indexes.asp	0.12%	9
12	University of Maine at Fort Kent - Blake Library http://www.umfk.maine.edu/infoserv/library/grants/	0.06%	5
13	University of Maine at Fort Kent - Blake Library http://www.umfk.maine.edu/infoserv/library/resources/evaluating/default.cfm	0.05%	4
14	University of Maine at Fort Kent - Blake Library http://www.umfk.maine.edu/infoserv/library/default.cfm	0.05%	4
15	University of Maine at Fort Kent - Blake Library http://www.umfk.maine.edu/infoserv/library/help/faqs/default.cfm	0.04%	3
16	UMFK: Century of Progress http://www.umfk.maine.edu/infoserv/library/cataloged/century/JoeFox.htm	0.04%	3
17	University of Maine at Fort Kent - Blake Library	0.04%	3

Top Entry Pages			
	Page	% of Total	Visits
	http://www.umfk.maine.edu/infoserv/library/images/map/		
18	University of Maine at Fort Kent - Blake Library http://www.umfk.maine.edu/infoserv/library/resources/serials/bysubj.asp	0.04%	3
19	University of Maine at Fort Kent - Blake Library http://www.umfk.maine.edu/infoserv/library/about/services/	0.04%	3
20	University of Maine at Fort Kent - Blake Library http://www.umfk.maine.edu/infoserv/library/resources/videos/fkvideos.cfm	0.04%	3
Total For the Pages Above		99.42%	7,243


Top Entry Pages - Help Card

 **Entry Page** - The first page a visitor sees when entering your Web site. To qualify as an entry page the visit must start with a valid page type. If a session starts at a file with a different type (such as a graphic or sound file), the file does not count as an entry page, and the session is not included in the total. Such sessions are often the result of other sites referencing a specific downloadable file or graphic on your site. In these cases, a session may have a single hit to a non-page file, and will not be counted. Also, Web servers do not always log hits in perfect chronological order. For example, a hit to a GIF file can appear in the log before the hit to the HTML page that refers to this GIF.

Page - Specific page being analyzed. If the page has a formal title, you will see the title of the page and the URL. Otherwise, you will only see the URL.

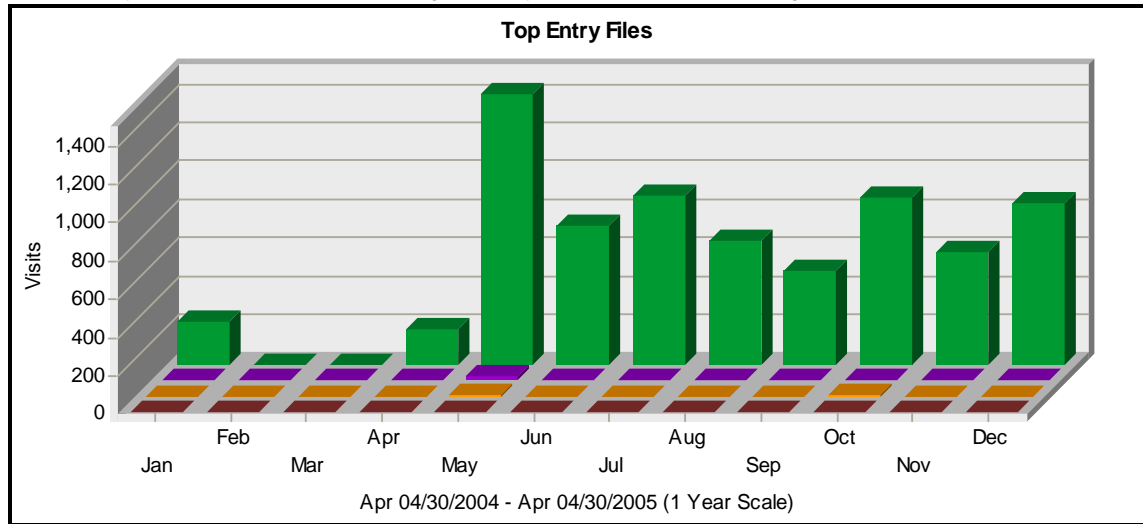
Visits - Number of times the specified page was the entry page. Individual visitors are counted each time they come to the Web site. If a visitor is idle longer than the idle-time limit, WebTrends assumes the visit was voluntarily terminated. If the visitor continues to browse your site after they reach the idle-time limit, a new visit is counted. The default idle-time limit is thirty minutes.

% - Percentage of times this page was the entry page compared with other entry pages.

 This information can indicate how you might want to optimize the architecture of your Web site based on where your visitors are entering. It can also help you determine which external links are most effective. Consider updating meta-tags and links.



Top Entry Files

This page identifies the first hit from a visitor visiting your site. This is most likely the home page but, in some cases it may also be specific URLs that go directly to a particular file or page.



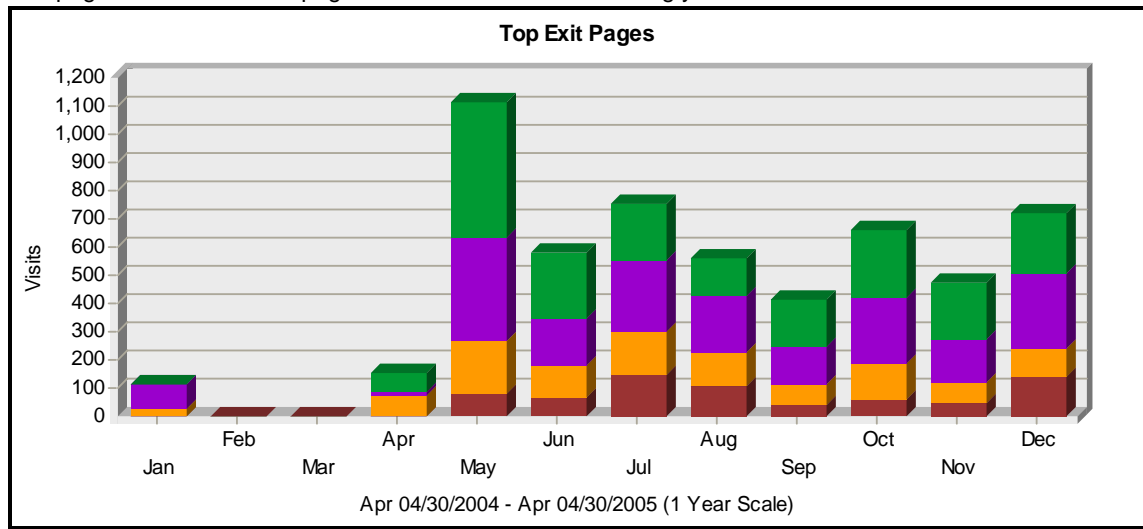
Top Entry Files			
	File	% of Total	Visits
1	University of Maine at Fort Kent - Blake Library http://www.umfk.maine.edu/infoserv/library/	95.21%	6,931
2	http://www.umfk.maine.edu/infoserv/library/indxdb/alphalist.asp	0.86%	63
3	http://www.umfk.maine.edu/infoserv/library/research/ursus.cfm	0.78%	57
4	University of Maine at Fort Kent - Blake Library http://www.umfk.maine.edu/infoserv/library/resources/	0.38%	28
5	University of Maine at Fort Kent - Blake Library http://www.umfk.maine.edu/infoserv/library/resources/citation/default.cfm	0.32%	24
6	University of Maine at Fort Kent - Blake Library http://www.umfk.maine.edu/infoserv/library/resources/tutorials/default.cfm	0.28%	21
7	Internal Library Staff documentation http://www.umfk.maine.edu/infoserv/library/staffdocs/main.htm	0.19%	14
8	http://www.umfk.maine.edu/infoserv/library/images/banner.gif	0.16%	12
9	http://www.umfk.maine.edu/infoserv/library/indxdb/test.asp	0.16%	12
10	University of Maine at Fort Kent - Blake Library http://www.umfk.maine.edu/infoserv/library/about/staffhrs/	0.15%	11
11	http://www.umfk.maine.edu/infoserv/library/indxdb/indexes.asp	0.12%	9
12	University of Maine at Fort Kent - Blake Library http://www.umfk.maine.edu/infoserv/library/distance/online/	0.12%	9
13	http://www.umfk.maine.edu/infoserv/library/indxdb/images/info1.gif	0.09%	7
14	University of Maine at Fort Kent - Blake Library http://www.umfk.maine.edu/infoserv/library/grants/	0.06%	5
15	University of Maine at Fort Kent - Blake Library http://www.umfk.maine.edu/infoserv/library/resources/evaluating/default.cfm	0.05%	4
16	University of Maine at Fort Kent - Blake Library http://www.umfk.maine.edu/infoserv/library/default.cfm	0.05%	4
17	University of Maine at Fort Kent - Blake Library http://www.umfk.maine.edu/infoserv/library/resources/serials/bysubj.asp	0.04%	3
18	University of Maine at Fort Kent - Blake Library http://www.umfk.maine.edu/infoserv/library/resources/videos/fkvideos	0.04%	3

Top Entry Files			
	File	% of Total	Visits
	cfm		
19	University of Maine at Fort Kent - Blake Library http://www.umfk.maine.edu/infoserv/library/images/map/	0.04%	3
20	University of Maine at Fort Kent - Blake Library http://www.umfk.maine.edu/infoserv/library/about/services/	0.04%	3
Total For the Requests Above		99.23%	7,223

Top Entry Files - Help Card	
<p> File - Refers to the first file loaded to a visitor's browser. Contrast this with the first page loaded to a visitor's browser, displayed on the Top Entry Pages page. The entry page for some visitors is not a formally defined page (such as a graphic or sound file), so the information in this table and graph include all first hits regardless if the hit was on a formal page or not.</p> <p>Visits - Number of visitors whose first hit was the specified file.</p> <p>% - Refers to the total numbers of visits.</p>	<p> Consider what catches the attention of visitors most quickly and effectively.</p>

Top Exit Pages

This page identifies the last page visitors viewed before leaving your site.



Top Exit Pages			
	Pages	% of Total	Visits ▼
1	http://www.umfk.maine.edu/infoserv/library/research/ursus.cfm	26.66%	1,944
2	http://www.umfk.maine.edu/infoserv/library/indxdb/alphalist.asp	25.48%	1,858
3	University of Maine at Fort Kent - Blake Library http://www.umfk.maine.edu/infoserv/library/	14.31%	1,044
4	University of Maine at Fort Kent - Blake Library http://www.umfk.maine.edu/infoserv/library/resources/citation/default.cfm	9.87%	720
5	http://www.umfk.maine.edu/infoserv/library/indxdb/test.asp	7.46%	544
6	University of Maine at Fort Kent - Blake Library http://www.umfk.maine.edu/infoserv/library/about/staffhrs/	2.67%	195
7	University of Maine at Fort Kent - Blake Library http://www.umfk.maine.edu/infoserv/library/resources/	1.35%	99
8	University of Maine at Fort Kent - Blake Library http://www.umfk.maine.edu/infoserv/library/about/services/	1.27%	93
9	http://www.umfk.maine.edu/infoserv/library/indxdb/indexes.asp	1.01%	74
10	http://www.umfk.maine.edu/infoserv/library/research/ursus.asp	0.79%	58
11	University of Maine at Fort Kent - Blake Library http://www.umfk.maine.edu/infoserv/library/resources/serials/bysubj.asp	0.65%	48
12	University of Maine at Fort Kent - Blake Library http://www.umfk.maine.edu/infoserv/library/resources/evaluating/default.cfm	0.54%	40
13	University of Maine at Fort Kent - Blake Library http://www.umfk.maine.edu/infoserv/library/forms/ill/article/	0.54%	40
14	University of Maine at Fort Kent - Blake Library http://www.umfk.maine.edu/infoserv/library/vr/	0.53%	39
15	University of Maine at Fort Kent - Blake Library http://www.umfk.maine.edu/infoserv/library/default.cfm	0.45%	33
16	University of Maine at Fort Kent - Blake Library http://www.umfk.maine.edu/infoserv/library/search/	0.41%	30
17	http://www.umfk.maine.edu/infoserv/library/resources/serials/searchsub.asp	0.31%	23
18	University of Maine at Fort Kent - Blake Library http://www.umfk.maine.edu/infoserv/library/resources/tutorials/default.cfm	0.28%	21

Top Exit Pages			
	Pages	% of Total	Visits ▼
19	No URL	0.26%	19
20	University of Maine at Fort Kent - Blake Library http://www.umfk.maine.edu/infoserv/library/resources/videos/fkvideos.cfm	0.20%	15
Total For the Pages Above (only visits starting on a valid document type are included)		95.14%	6,937

Top Exit Pages - Help Card

? Exit Page - The last page a visitor views before leaving your Web site. To qualify as an exit page the visit must end with a valid page type. If a session ends on a page with a different type (such as a graphic or sound file), the file does not count as an exit page, and the session is not included in the total. Such sessions are often the result of other sites referencing a specific downloadable file or graphic on your site. In these cases, a session may have a single hit to a non-page file, and will not be counted.

Pages - Specific page being analyzed. If the page has a formal title, you will see the title of the page as well as the URL. Otherwise, you will only see the URL.

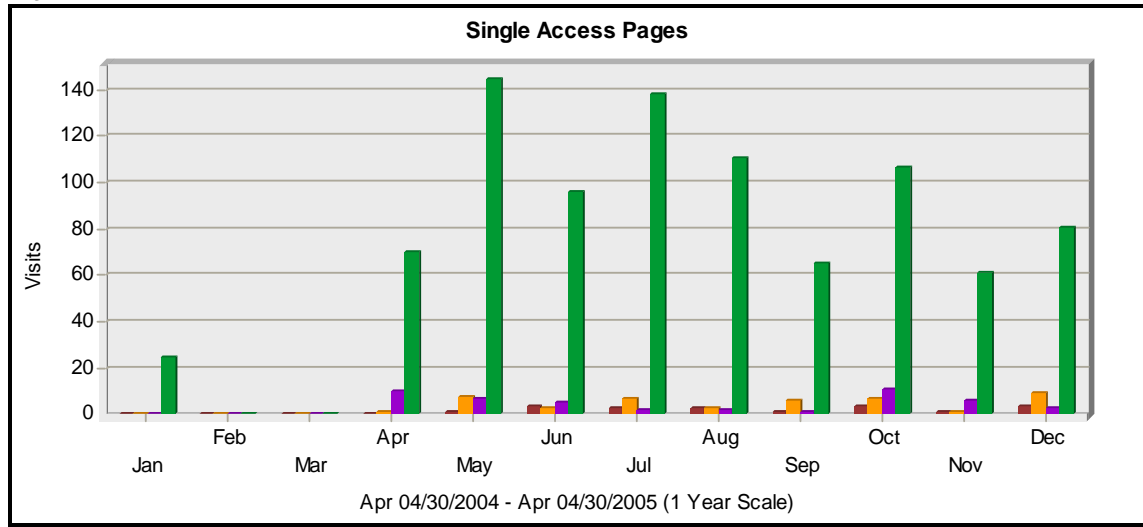
Visits - Number of times the specified page was the exit page. Individual visitors are counted each time they come to the Web site. If a visitor is idle longer than the idle-time limit, WebTrends assumes the visit was voluntarily terminated. If the visitor continues to browse your site after they reach the idle-time limit, a new visit is counted. The default idle-time limit is thirty minutes.

% - Percentage of times this page was the exit page compared with other exit pages.

💡 You can use this information to determine your visitors' satisfaction with their visits. Visitors may have left after viewing a specific page because they found what they were looking for, lost interest, determined the content didn't apply to them, or for many other reasons. If your top exit page is your home page, this may be an indication that you are alienating a lot of first-time visitors.

Single Access Pages

This page identifies the pages on your Web site that visitors open, then exit from, without viewing any other page.




Single Access Pages

	Pages	% of Total	Visits ▼
1	University of Maine at Fort Kent - Blake Library http://www.umfk.maine.edu/infoserv/library/	81.65%	899
2	http://www.umfk.maine.edu/infoserv/library/research/ursus.cfm	4.26%	47
3	http://www.umfk.maine.edu/infoserv/library/indxdb/alphalist.asp	4.08%	45
4	University of Maine at Fort Kent - Blake Library http://www.umfk.maine.edu/infoserv/library/resources/citation/default.cfm	1.90%	21
5	University of Maine at Fort Kent - Blake Library http://www.umfk.maine.edu/infoserv/library/resources/tutorials/default.cfm	0.90%	10
6	http://www.umfk.maine.edu/infoserv/library/indxdb/test.asp	0.81%	9
7	University of Maine at Fort Kent - Blake Library http://www.umfk.maine.edu/infoserv/library/resources/	0.72%	8
8	http://www.umfk.maine.edu/infoserv/library/indxdb/indexes.asp	0.63%	7
9	University of Maine at Fort Kent - Blake Library http://www.umfk.maine.edu/infoserv/library/about/staffhrs/	0.63%	7
10	University of Maine at Fort Kent - Blake Library http://www.umfk.maine.edu/infoserv/library/distance/online/	0.45%	5
11	University of Maine at Fort Kent - Blake Library http://www.umfk.maine.edu/infoserv/library/resources/evaluating/default.cfm	0.36%	4
12	University of Maine at Fort Kent - Blake Library http://www.umfk.maine.edu/infoserv/library/help/faqs/default.cfm	0.27%	3
13	Internal Library Staff documentation http://www.umfk.maine.edu/infoserv/library/staffdocs/main.htm	0.27%	3
14	University of Maine at Fort Kent - Blake Library http://www.umfk.maine.edu/infoserv/library/resources/videos/fkvideos.cfm	0.27%	3
15	University of Maine at Fort Kent - Blake Library http://www.umfk.maine.edu/infoserv/library/grants/	0.27%	3
16	UMFK: Century of Progress http://www.umfk.maine.edu/infoserv/library/cataloged/century/JoeFox.htm	0.27%	3
17	University of Maine at Fort Kent - Blake Library	0.18%	2

Single Access Pages			
	Pages	% of Total	Visits ▼
	http://www.umfk.maine.edu/infoserv/library/images/map/		
18	University of Maine at Fort Kent - Blake Library http://www.umfk.maine.edu/infoserv/library/default.cfm	0.18%	2
19	University of Maine at Fort Kent - Blake Library http://www.umfk.maine.edu/infoserv/library/about/services/	0.09%	1
20	University of Maine at Fort Kent - Blake Library http://www.umfk.maine.edu/infoserv/library/about/services/reserves/	0.09%	1
Total For the Pages Above		98.36%	1,083


Single Access Pages - Help Card

 **Single Access Page** - A page on your Web site that visitors open, then exit from, without viewing any other page. To qualify the visit must be to a page that is a valid page type. If the visit is to a file of a different type (such as a graphic or sound file), the file does not count as a single access page, and the visit is not included in the total. Such visits are often the result of other sites referencing a specific downloadable file or graphic on your site. In these cases, a visit may be a single hit to a non-page file, and will not be counted.

Pages - Specific page being analyzed. If the page has a formal title, you will see the title of the page as well as the URL. Otherwise, you will see only the URL.

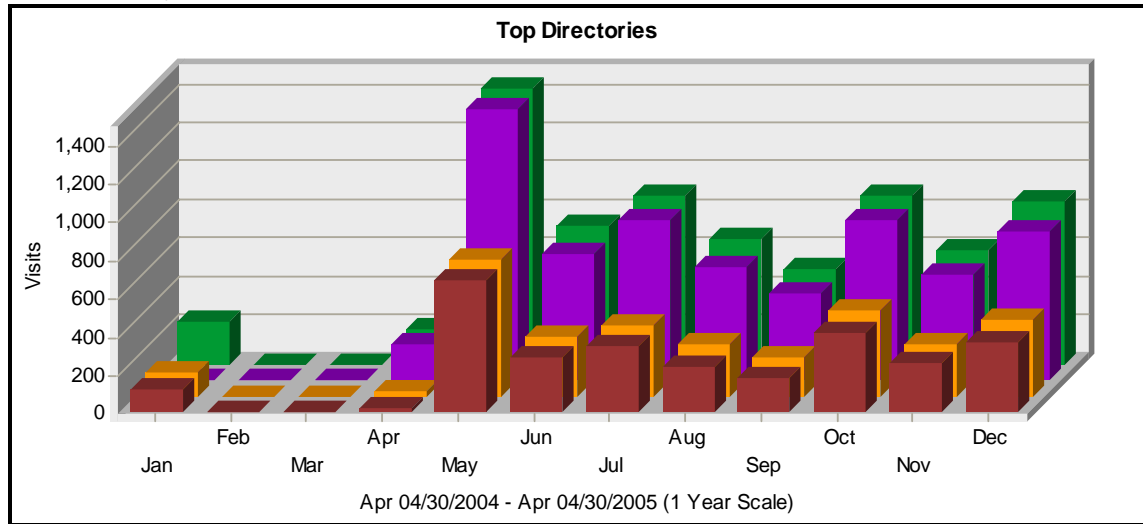
Visits - Number of times the specified page was a single access page. Individual visitors are counted each time they come to the Web site. If a visitor is idle longer than the idle-time limit, WebTrends assumes the visit was voluntarily terminated. If the visitor continues to browse your site after they reach the idle-time limit, a new visit is counted. The default idle-time limit is thirty minutes.

% - Percentage of times this page was a single access page compared with other single access pages.

 This information can be helpful when considering the design of the site with respect to the kind of visitors you attract. Consider how well these pages convey your message. Do they need improvement to extend visits, or is it possible that are you attracting the wrong visitors?

Top Directories

This page lists the most common directories accessed by visitors to your Web site. This information can help determine the types of data most often requested.



Top Directories

	Path to Directory	Hits	% of Total Hits	Non-cached %	Non-cached Bytes	Visits ▼
1	/infoserv/library	27,691	24.88 %	90.51%	0	7,011
2	/infoserv/library/images	46,841	42.09 %	64.52%	0	6,340
3	/infoserv/library/indxdb	6,582	5.91%	100.00%	0	3,199
4	/infoserv/library/indxdb/images	9,330	8.38%	59.89%	0	2,953
5	/infoserv/library/research	4,111	3.69%	100.00%	0	2,708
6	/infoserv/library/resources	5,042	4.53%	100.00%	0	1,535
7	/infoserv/library/resources/citation	1,162	1.04%	100.00%	0	982
8	/infoserv/library/about/services	1,133	1.01%	100.00%	0	441
9	/infoserv/library/resources/serials	970	0.87%	100.00%	0	387
10	/infoserv/library/about/staffhrs	699	0.62%	100.00%	0	361
11	/infoserv/library/search	689	0.61%	100.00%	0	273
12	/infoserv/library/vr	555	0.49%	100.00%	0	246
13	/infoserv/library/forms	550	0.49%	100.00%	0	225
14	/infoserv/library/resources/libcongress	671	0.60%	100.00%	0	213
15	/infoserv/library/about	437	0.39%	100.00%	0	175
16	/infoserv/library/resources/citation/ap a	323	0.29%	96.59%	0	164
17	/infoserv/library/resources/tutorials	322	0.28%	100.00%	0	155
18	/infoserv/library/resources/evaluating	246	0.22%	100.00%	0	137
19	/infoserv/library/forms/ill/article	323	0.29%	100.00%	0	112
20	/infoserv/library/resources/wwwsub	320	0.28%	100.00%	0	109

Top Directories - Help Card

? Hits - Number of hits to files within the specified directory. A hit is a single action on the Web server as it appears in the log file. A visitor downloading a single file is logged as a single hit, while a visitor requesting a Web page including two images registers as three hits on the server; one hit is the request for the .html page, and two additional hits are requests for the downloaded image files. While the volume of hits is an indicator of Web server traffic, it is not an accurate reflection of how many pages are being

Top Directories - Help Card

looked at.

Non-cached Bytes - Number of non-cached bytes of data transferred.

Non-cached % - Percentage of hits that were not already in the visitor's browser cache.

Path to Directory - The full URL path to the directory being analyzed.

Visits - Number of visits to pages within the specified directory. If a visitor is idle longer than the idle-time limit, WebTrends assumes the visit was voluntarily terminated. If the visitor continues to browse your site after they reach the idle-time limit, a new visit is counted. The default idle-time limit is thirty minutes.

% of Total Hits - Percentage of hits to the specified directory out of hits to all directories.



These trends indicate the content visitors are most interested in. Use this information to determine which content areas to develop further, which areas to focus on less, and how you can arrange your content most effectively.


Top Paths Through Site

This section identifies the paths visitors most often follow when visiting the site. The path begins at the starting page and shows the following consecutive pages viewed.

Top Paths Through Site by Starting Page		
Paths from Start	% of Total	Visits
Starting Page: All Entry Pages		
1. University of Maine at Fort Kent - Blake Library http://www.umfk.maine.edu/infoserv/library/ 2. http://www.umfk.maine.edu/infoserv/library/indxdb/alphalist.asp	15.30%	1116
1. University of Maine at Fort Kent - Blake Library http://www.umfk.maine.edu/infoserv/library/ 2. http://www.umfk.maine.edu/infoserv/library/research/ursus.cfm	12.64%	922
1. University of Maine at Fort Kent - Blake Library http://www.umfk.maine.edu/infoserv/library/	11.80%	861
1. University of Maine at Fort Kent - Blake Library http://www.umfk.maine.edu/infoserv/library/ 2. http://www.umfk.maine.edu/infoserv/library/indxdb/alphalist.asp 3. http://www.umfk.maine.edu/infoserv/library/indxdb/test.asp	4.12%	301
1. University of Maine at Fort Kent - Blake Library http://www.umfk.maine.edu/infoserv/library/ 2. University of Maine at Fort Kent - Blake Library http://www.umfk.maine.edu/infoserv/library/resources/ 3. University of Maine at Fort Kent - Blake Library http://www.umfk.maine.edu/infoserv/library/resources/citation/default.cfm	3.26%	238
1. University of Maine at Fort Kent - Blake Library http://www.umfk.maine.edu/infoserv/library/ 2. http://www.umfk.maine.edu/infoserv/library/research/	2.48%	181
1. University of Maine at Fort Kent - Blake Library http://www.umfk.maine.edu/infoserv/library/ 2. University of Maine at Fort Kent - Blake Library	2.13%	156

Top Paths Through Site by Starting Page		
Paths from Start	% of Total	Visits
http://www.umfk.maine.edu/infoserv/library/about/staffhrs/		
1. University of Maine at Fort Kent - Blake Library http://www.umfk.maine.edu/infoserv/library/ 2. University of Maine at Fort Kent - Blake Library http://www.umfk.maine.edu/infoserv/library/indxdb/alphalist.asp 3. University of Maine at Fort Kent - Blake Library http://www.umfk.maine.edu/infoserv/library/ 4. University of Maine at Fort Kent - Blake Library http://www.umfk.maine.edu/infoserv/library/indxdb/alphalist.asp	1.42%	104
1. University of Maine at Fort Kent - Blake Library http://www.umfk.maine.edu/infoserv/library/ 2. University of Maine at Fort Kent - Blake Library http://www.umfk.maine.edu/infoserv/library/about/	0.93%	68
1. University of Maine at Fort Kent - Blake Library http://www.umfk.maine.edu/infoserv/library/ 2. University of Maine at Fort Kent - Blake Library http://www.umfk.maine.edu/infoserv/library/research/ursus.asp	0.72%	53

Top Paths Through Site - Help Card


 **Path Through Site** - The path a visitor takes from the entry page to the exit page.

Paths from Start - With the exception of the starting page, this column lists all the pages in the top paths taken through your site. These lists are grouped so that more than one row has the same starting page. To see the starting page for each of these lists, look in the Starting Page column and find the first entry up from the Paths from Start row.

Starting Page - The first page, or entry page, in the full path visitors take through your site.

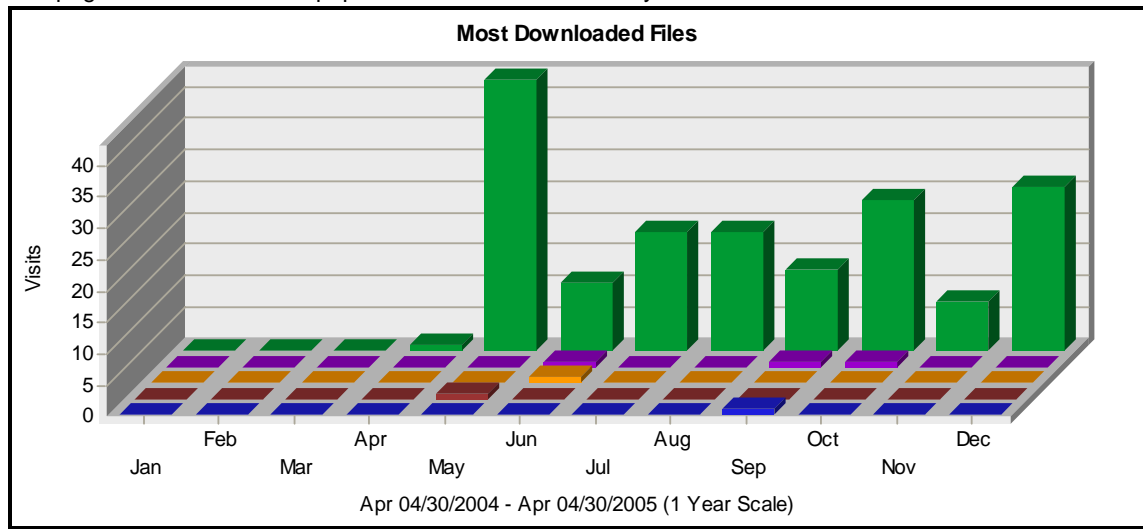
Visits - Number of times the specified path was followed.

% - Percentage of times that the specified path through your site was followed out of all listed paths through your site.

 Use this information to evaluate the design of your Web site. Where do your visitors go once they reach your site? Which pages are visited first? Do your visitors appear to be looking for pages that should be more accessible?

Most Downloaded Files

This page identifies the most popular files downloaded from your site.



Most Downloaded Files

	File	No. of Downloads	% of Total Downloads	Visits ▼
1	http://www.umfk.maine.edu/infoserv/library/resources/citation/apa/apa_nursing.pdf	323	97.58%	164
2	http://www.umfk.maine.edu/infoserv/library/images/map/upstairs.pdf	4	1.20%	3
3	http://www.umfk.maine.edu/infoserv/library/garants/sectorinitiative/sectorinitiative.pdf	1	0.30%	1
4	http://www.umfk.maine.edu/infoserv/library/images/map/downstairs.pdf	2	0.60%	1
5	http://www.umfk.maine.edu/infoserv/library/tutorials/keyword.viewlet/keyword.exe	1	0.30%	1
Total For the Files Above		331	100.00%	N/A

Most Downloaded Files - Help Card

? Downloads - Number of times the specified file was downloaded by a visitor. If an error occurred during the transfer, that transfer is not counted.

Files - The path and filename of the downloaded file.

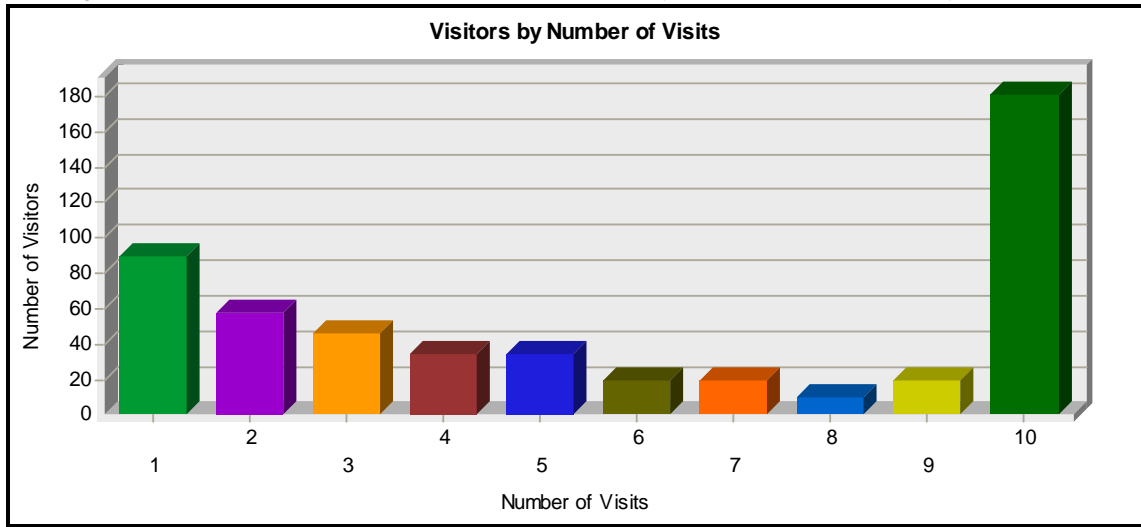
Visits - Number of visits which resulted in at least one download of the specified file. If a visitor downloads the file more than once per visit, it does not count as another visit. If a visitor is idle longer than the idle-time limit, WebTrends assumes the visit was voluntarily terminated. If the visitor continues to browse your site after they reach the idle-time limit, a new visit is counted. The default idle-time limit is thirty minutes.

% - Percentage of times the specified file was downloaded out of all downloaded files.

💡 This information shows you the most popular downloadable files on your Web site. Files that don't appear on the list, or appear low on the list, may require maintenance such as decreasing the file size, improving link placement, or elimination to make room for more popular content.

Visitors by Number of Visits

This page shows the distribution of visitors based on how many times each visitor visited your site.



Visitors by Number of Visits		
Number of Visits	Number of Visitors	% of Total Unique Visitors
1 visit	90	17.50%
2 visits	58	11.28%
3 visits	46	8.94%
4 visits	35	6.80%
5 visits	34	6.61%
6 visits	20	3.89%
7 visits	20	3.89%
8 visits	10	1.94%
9 visits	20	3.89%
10 or more visits	181	35.21%

Visitors by Number of Visits - Help Card

? Number of Visitors - Number of unique individuals who came to your site the amount of times specified in the Number of Visits column.

Number of Visits - The number of visits, beginning with one and increasing by increments of one, being analyzed in the other columns.

% of Total Unique Visitors - Percentage of unique visitors who came to your site the amount of times specified in the Number of Visits column.

💡 This information can indicate whether or not your site compels visitors to return. Updating Web site content is one way to draw return visitors.

Top Visitors

This section identifies the IP address and/or domain name and their relative activity level on the site. If you do not use WebTrends cookies to track visits on the site, WebTrends cannot differentiate between hits from different visitors of a same IP.

Top Visitors				
	Visitor	Hits	% of Total Hits	Visits ▼
1	130.111.185.26	559	0.45%	95
2	130.111.186.176	1,534	1.25%	94
3	130.111.186.186	1,267	1.03%	91
4	130.111.186.183	1,272	1.04%	90
5	130.111.186.180	1,375	1.12%	84
6	130.111.184.111	1,297	1.06%	84
7	130.111.186.173	1,272	1.04%	82
8	130.111.186.184	1,201	0.98%	79
9	130.111.184.230	675	0.55%	74
10	130.111.186.181	1,086	0.88%	72
11	130.111.186.17	805	0.65%	71
12	130.111.185.19	566	0.46%	69
13	130.111.186.177	1,050	0.85%	69
14	130.111.186.188	1,079	0.88%	68
15	130.111.186.174	965	0.78%	68
16	130.111.186.142	2,801	2.29%	65
17	130.111.186.189	1,116	0.91%	63
18	130.111.70.125	847	0.69%	63
19	130.111.184.28	812	0.66%	63
20	130.111.186.171	984	0.80%	62
Subtotal for Visitors Above		22,563	18.45%	1,506
Total		111,282	100%	7,306


Top Visitors - Help Card

? Hits - Number of hits from the specified visitor. A hit is a single action on the Web server as it appears in the log file. A visitor downloading a single file is logged as a single hit, while a visitor requesting a Web page including two images registers as three hits on the server; one hit is the request for the .html page, and two additional hits are requests for the downloaded image files. While the volume of hits is an indicator of Web server traffic, it is not an accurate reflection of how many pages are being looked at.

Visitor - If cookies are enabled, this column will display the cookie from the specified visitor. If cookies are not enabled, and the IP address of the visitor can be resolved, this column will display the resolved IP address of the specified visitor. Otherwise, this column will display the non-resolved IP address of the visitor.

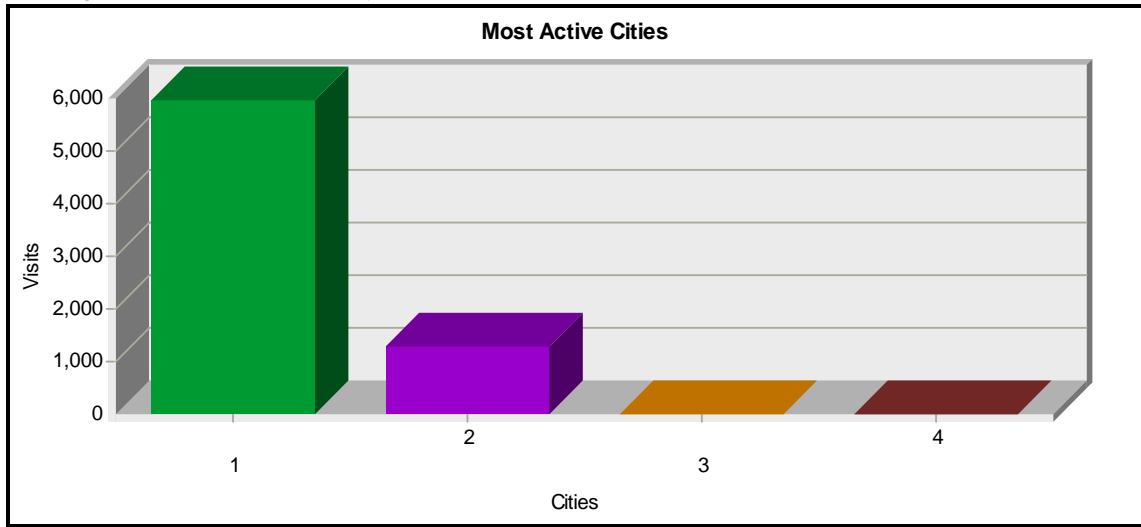
Visits - Number of times the specified visitor visited your Web site.

% - Percentage of hits from the specified visitor.

 Use this information to find out which individuals visit your site the most and how frequently they visit.

Most Active Cities

This page identifies the cities with your most active visitors.



Most Active Cities

	City, State, Country	Visits ▼
1	Fort Kent, Maine, United States	5,996
2	Orono, Maine, United States	1,302
3	Gorham, Maine, United States	6
4	Presque Isle, Maine, United States	2
Total for the Cities above		7,306

Most Active Cities - Help Card

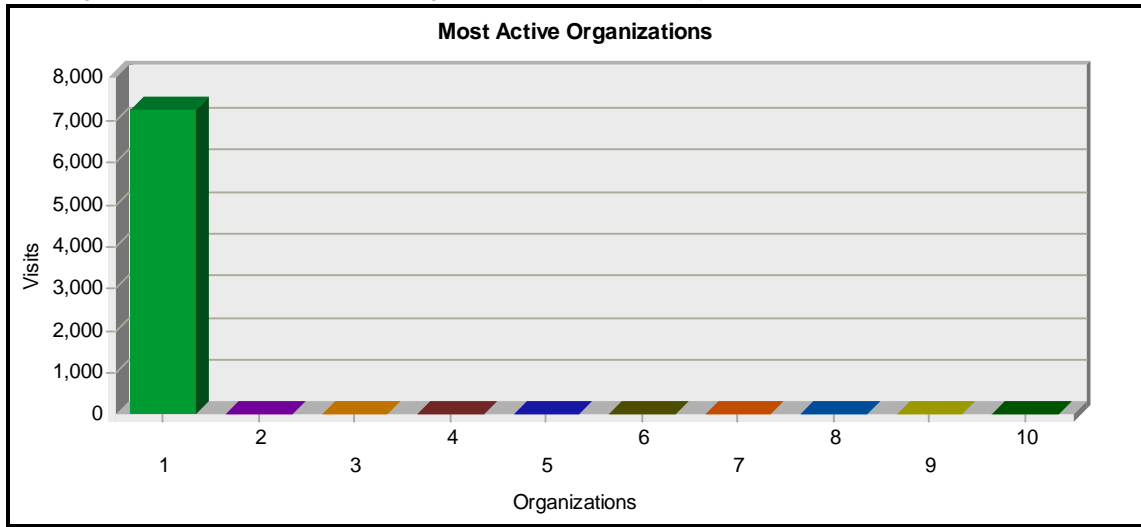
? City, State, Country - If GeoTrends is turned on for this profile, the location is determined by looking up the visitor's IP address in this database.

Visits - Number of visits from the specified city. If a visitor is idle longer than the idle-time limit, WebTrends assumes the visit was voluntarily terminated. If the visitor continues to browse your site after they reach the idle-time limit, a new visit is counted. The default idle-time limit is thirty minutes.

💡 This information can help you meet the needs of your target audience as well as discover new audiences. Consider how you can make the content comprehensive and relevant to an international audience.

Most Active Organizations

This page identifies the companies or organizations which visited your site most often.



Most Active Organizations				
	Organizations	Hits	% of Total Hits	Visits ▼
1	University of Maine System	7,279	6.54%	7,279
2	130.111.186.45	430	0.38%	0
3	130.111.186.46	451	0.40%	0
4	130.111.185.30	17	0.01%	0
5	130.111.184.146	429	0.38%	0
6	130.111.184.157	337	0.30%	0
7	130.111.70.111	77	0.06%	0
8	130.111.184.159	245	0.22%	0
9	130.111.70.125	713	0.64%	0
10	130.111.70.252	56	0.05%	0
11	130.111.70.97	6	0.00%	0
12	130.111.186.53	238	0.21%	0
13	130.111.70.120	115	0.10%	0
14	130.111.184.77	27	0.02%	0
15	130.111.70.75	228	0.20%	0
16	130.111.184.160	316	0.28%	0
17	130.111.186.115	81	0.07%	0
18	130.111.186.43	217	0.19%	0
19	130.111.70.82	5	0.00%	0
20	130.111.186.185	65	0.05%	0
Subtotal For Organizations Above		11,332	10.18%	7,279
Total for the Log File		111,282	100%	7,306

Most Active Organizations - Help Card

? **Hits** - Number of hits to your site from the specified organization. A hit refers to a single action on the Web server as it appears in the log file. A visitor downloading a single file is logged as a single hit, while a visitor requesting a Web page including two images registers as three hits on the server; one hit is the request for the .html page, and the two additional hits are requests for the downloaded image files. While the volume of hits is an indicator of Web server traffic, it is not an accurate reflection of how many pages are being looked at.

Most Active Organizations - Help Card

Organizations - If GeoTrends is enabled, the name of the company or organization is found by looking up the visitor's IP address in the GeoTrends database. If DNS domain name resolution is enabled and the domain name for this IP address is found, the domain name will be shown. If neither GeoTrends nor DNS resolution is enabled, only IP addresses are shown.

Subtotal - Sum of all data rows for each listed organization.

Total - Sum of the subtotal and all data that does not appear on the page.

Visits - Number of visits to your site from the specified organization. If a visitor is idle longer than the idle-time limit, WebTrends assumes the visit was voluntarily terminated. If the visitor continues to browse your site after they reach the idle-time limit, a new visit is counted. The default idle-time limit is thirty minutes.

% - Percentage of total hits from a visitor inside the specified organization.



Determine how your Web site can be improved according to how businesses use your site. Consider how your product can be made more attractive to organizations that have shown interest.

Summary of Activity for Report Period

This page summarizes general server activity.

Summary of Activity for Report Period	
Average Number of Visits per Day on Weekdays	32
Average Number of Hits per Day on Weekdays	514
Average Number of Visits per Weekend	22
Average Number of Hits per Weekend	272
Most Active Day of the Week	Tue
Least Active Day of the Week	Sat
Most Active Date	September 21, 2004
Number of Hits on Most Active Date	5,355
Least Active Date	December 18, 2004
Number of Hits on Least Active Date	4
Most Active Hour of the Day	13:00-13:59
Least Active Hour of the Day	04:00-04:59

Summary of Activity for Report Period - Help Card

 **Average Number of Hits (per day on weekdays)** - The average number of hits for each individual day of the week.

Average Number of Hits (per weekend) - The average number of hits for both Saturdays and Sundays combined.

Average Number of Visits (per day on weekdays) - The average number of visits for each individual day of the week.

Average Number of Visits (per weekend) - The average number of visits for both Saturdays and Sundays combined.

Least Active Date - The least active date in the report period.


Least Active Day of the Week - If the report period is for one week or less, the Least Active Day of the Week will tell you which specific day was least active during that week. If the report period is for more than one week, the Least Active Day of the Week will tell you which day of the week that has the smallest amount of activity on average.

Least Active Hour of the Day - The least active hour of the day after activity for all hours is added up. This is not an average.

Most Active Date - The most active date in the report period.

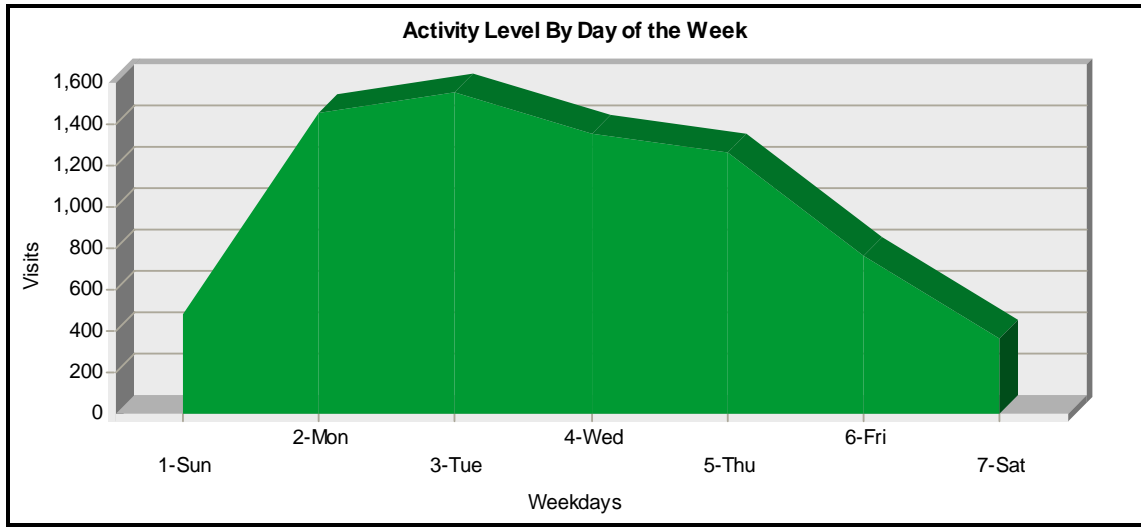
Most Active Day of the Week - If the report period is for one week or less, the Most Active Day of the Week will tell you which specific day was most active during that week. If the report period is for more than one week, the Most Active Day of the Week will tell you which day of the week that has the largest amount of activity on average.

Most Active Hour of the Day - The most active hour of the day after activity for all hours is added up. This is not an average.

 This table is useful for determining the best day of the week to perform system maintenance.

Activity Level by Day of the Week

This page shows the activity for each day of the week within the reporting period. Unsuccessful hits are not included.



Activity Level by Day of the Week

	Day	Hits	% of Total Hits	Visits
1	Sun	5,948	5.34%	489
2	Mon	20,963	18.83%	1,457
3	Tue	25,168	22.61%	1,559
4	Wed	21,714	19.51%	1,359
5	Thu	21,780	19.57%	1,272
6	Fri	11,305	10.15%	771
7	Sat	4,404	3.95%	372
Total Weekdays		100,930	90.69%	6,418
Total Weekend		10,352	9.30%	861

Activity Level by Day of the Week - Help Card

? **Day** - Specified day of the week being tracked.

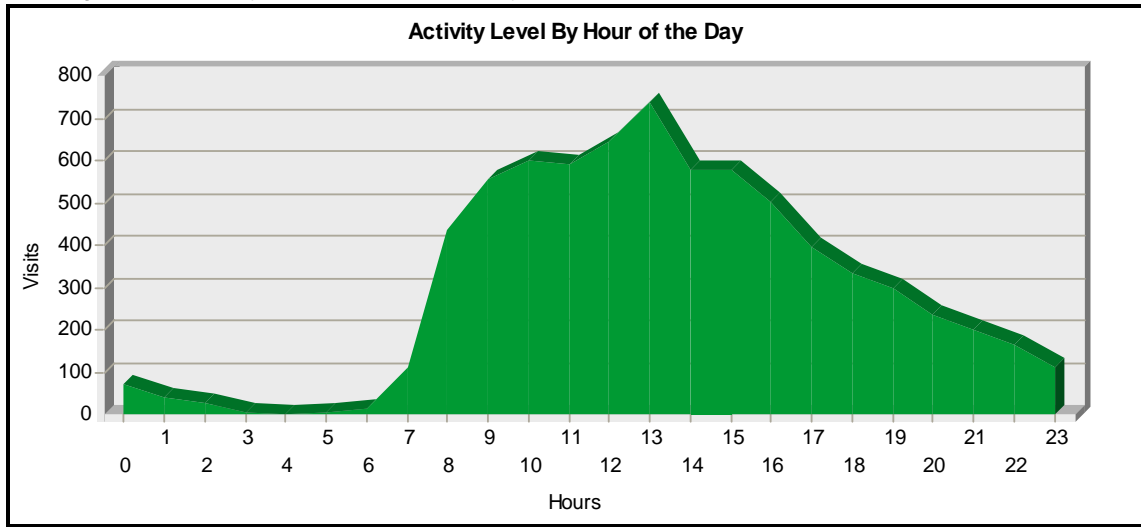
Hits - Number of hits on the specified day of the week. If the report period is longer than one week, and there are, for example, two Mondays, the value represented includes the combined total of both Mondays. Unsuccessful hits are not counted. A hit is a single action on the Web server as it appears in the log file. A visitor downloading a single file is logged as a single hit, while a visitor requesting a Web page including two images registers as three hits on the server; one hit is the request for the .html page, and two additional hits are requests for the downloaded image files. While the volume of hits is an indicator of Web server traffic, it is not an accurate reflection of how many pages are being looked at.

Visits - Number of visits on the specified day of the week. If the report period is longer than one week, and there are, for example, two Mondays, the value represented includes the combined total of both Mondays. Unsuccessful hits are not counted. If a visitor is idle longer than the idle-time limit, WebTrends assumes the visit was voluntarily terminated. If the visitor continues to browse your site after they reach the idle-time limit, a new visit is counted. The default idle-time limit is thirty minutes. This time limit can be changed by the system administrator.

% - Percentage of total hits that occurred on the specified day of the week.

Activity Level by Hour of the Day

This page shows activity for each hour of the day.



Activity Level by Hours Details

Hour	# of Hits	% of Total Hits	# of Visits
00:00-00:59	836	0.75%	72
01:00-01:59	496	0.44%	42
02:00-02:59	263	0.23%	27
03:00-03:59	118	0.10%	8
04:00-04:59	62	0.05%	4
05:00-05:59	69	0.06%	7
06:00-06:59	192	0.17%	17
07:00-07:59	1,302	1.17%	115
08:00-08:59	6,415	5.76%	437
09:00-09:59	8,545	7.67%	559
10:00-10:59	9,141	8.21%	601
11:00-11:59	8,698	7.81%	592
12:00-12:59	9,826	8.82%	647
13:00-13:59	13,544	12.17%	739
14:00-14:59	8,345	7.49%	580
15:00-15:59	7,116	6.39%	578
16:00-16:59	9,401	8.44%	504
17:00-17:59	9,159	8.23%	396
18:00-18:59	5,100	4.58%	337
19:00-19:59	3,749	3.36%	300
20:00-20:59	2,970	2.66%	236
21:00-21:59	2,564	2.30%	200
22:00-22:59	1,894	1.70%	168
23:00-23:59	1,477	1.32%	113
Total Visitors during Work Hours (8:00am-5:00pm)	81,031	72.81%	5,237
Total Visitors during After Hours (5:01pm-7:59am)	30,251	27.18%	2,042

Activity Level by Hour of the Day - Help Card

? **Hits** - Number of hits on the specified hour of the day. If the report period is longer than one day, and there are, for example, two instances of the same hour, the value represented includes the combined total

Activity Level by Hour of the Day - Help Card

of both instances. Unsuccessful hits are not counted. A hit is a single action on the Web server as it appears in the log file. A visitor downloading a single file is logged as a single hit, while a visitor requesting a Web page including two images registers as three hits on the server; one hit is the request for the .html page, and two additional hits are requests for the downloaded image files. While the volume of hits is an indicator of Web server traffic, it is not an accurate reflection of how many pages are being looked at.

Hour - Specified hour of the day being tracked.

Visits - Number of visits on the specified hour of the day. If the report period is longer than one day, and there are, for example, two instances of the same hour, the value represented includes the combined total of both instances. Unsuccessful hits are not counted. If a visitor is idle longer than the idle-time limit, WebTrends assumes the visit was voluntarily terminated. If the visitor continues to browse your site after they reach the idle-time limit, a new visit is counted. The default idle-time limit is thirty minutes. This time limit can be changed by the system administrator.

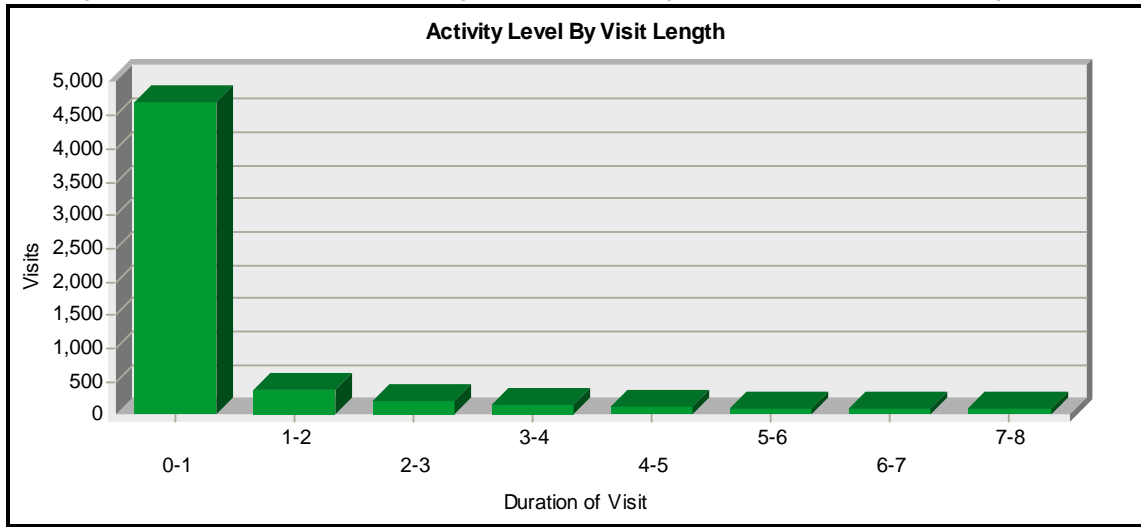
% - Percentage of total hits that occurred on the specified hour of the day.



Hours of less activity should be considered good days for maintenance and content improvement.

Activity Level by Length of Visit

This page shows the number and percentages of visits and page views over selected visit lengths.



Activity Level by Length of Visit				
Visit Duration (Minutes)	Visits	Page Views	% of Total Visits	% of Total Views
0-1	4,690	15,604	64.19%	34.32%
1-2	380	2,262	5.20%	4.97%
2-3	210	1,378	2.87%	3.03%
3-4	150	1,063	2.05%	2.33%
4-5	135	941	1.84%	2.06%
5-6	95	733	1.30%	1.61%
6-7	88	645	1.20%	1.41%
7-8	90	649	1.23%	1.42%
8-9	78	626	1.06%	1.37%
9-10	71	548	0.97%	1.20%
10-11	51	325	0.69%	0.71%
11-12	52	391	0.71%	0.86%
12-13	58	503	0.79%	1.10%
13-14	56	497	0.76%	1.09%
14-15	40	412	0.54%	0.90%
15-16	44	460	0.60%	1.01%
16-17	51	488	0.69%	1.07%
17-18	44	508	0.60%	1.11%
18-19	48	443	0.65%	0.97%
> 19	875	16,985	11.97%	37.36%
Totals	7,306	45,461	100%	100%

Activity Level by Length of Visit - Help Card

? Page Views - Number of page views from visitors who viewed your page for the specified duration of time.

Visit Duration (Minutes) - Number of minutes your Web site was viewed. Visit lengths are tracked to a maximum of 60 minutes.

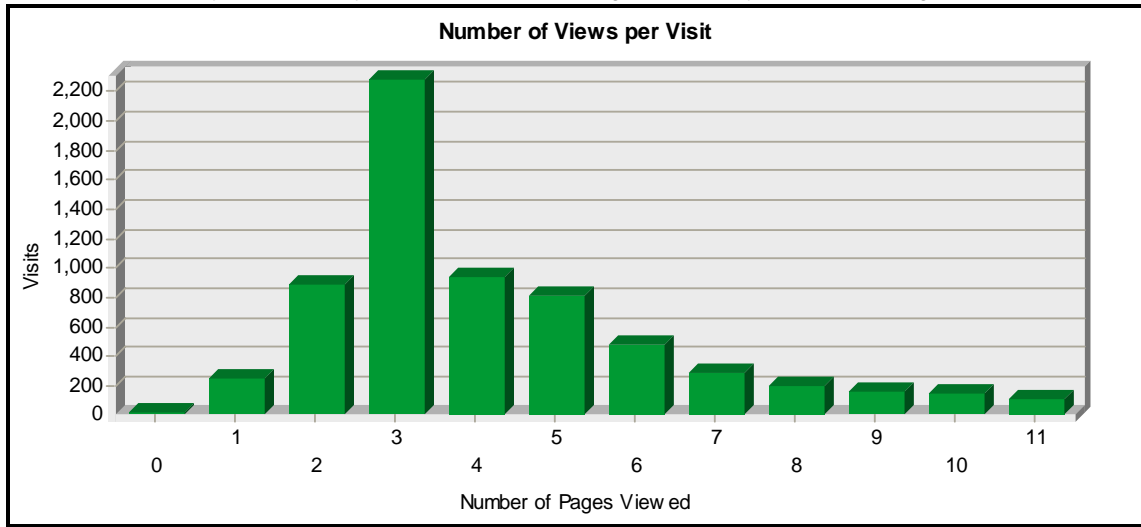
Visits - Number of visitors who viewed your page for the specified duration of time.

% of Total Page Views - Percentage of page views from visitors who viewed your page for the specified duration of time.

% of Total Visits - Percentage of visitors who viewed your page for the specified duration of time.

Number of Views per Visit

This section shows you how many visitors viewed one page, how many viewed two pages, etc.



Number of Pages Viewed per Visit

Number of Pages Viewed	Number of Visits	% of Total Visits
0 pages	15	0.20%
1 page	253	3.46%
2 pages	888	12.15%
3 pages	2,284	31.26%
4 pages	934	12.78%
5 pages	813	11.12%
6 pages	484	6.62%
7 pages	289	3.95%
8 pages	203	2.77%
9 pages	164	2.24%
10 pages	145	1.98%
11 or more pages	834	11.41%
Totals	7,306	100%

Number of Views per Visit - Help Card

? Number of Pages Viewed - The number of pages viewed, beginning with one and increasing by increments of one, being analyzed in the other columns.

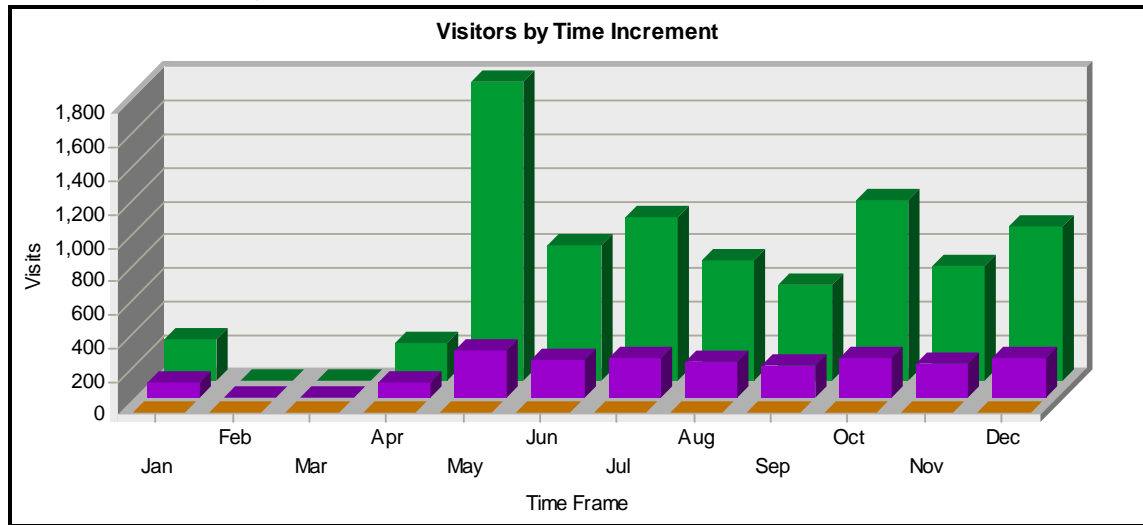
Number of Visits - Number of visits by people who viewed the specified number of pages. If a visitor is idle longer than the idle-time limit, WebTrends assumes the visit was voluntarily terminated. If the visitor continues to browse your site after they reach the idle-time limit, a new visit is counted. The default idle-time limit is thirty minutes. This time limit can be changed by the system administrator.

% - Percentage of total visits by people who viewed the specified number of pages.

💡 You can use this information to quickly find out the number and percentages of viewers who read a given number of pages on your site. If most visitors only view a few pages, it may indicate that they cannot find the content they are looking for.

Visitors by Time Increment

This page shows how many visitors viewed your Web site and how long they stayed. The information is split up into time increments based on the duration of the log file. Visitors are typically tracked using the cookie that's been defined or by their IP addresses.



Visitors by Time Increment					
Time Frame	Visitors	Unique Visitors	First-Time Visitors	Average Visit Length	Visitor-Minutes
Jan	257	93	0	00:03:30	901:10
Feb	0	0	0	0	0:00
Mar	0	0	0	0	0:00
Apr	225	90	0	00:03:03	689:28
May	1,789	286	0	00:11:02	19765:45
Jun	814	232	0	00:03:12	2608:56
Jul	987	242	0	00:03:09	3122:48
Aug	724	222	0	00:03:02	2197:10
Sep	584	195	0	00:04:11	2446:04
Oct	1,081	245	0	00:08:58	9703:19
Nov	695	213	0	00:05:50	4056:25
Dec	926	242	0	00:02:50	2627:41
Averages	673	171	0	00:04:03	4009:53
Totals	8,082	2,060	0	00:48:47	48118:46

Visitors by Time Increment - Help Card

? Visitors - Number of times a visitor came to your site during the specified time frame. If a visitor is idle longer than the idle-time limit, WebTrends assumes the visit was voluntarily terminated. If the visitor continues to browse your site after they reach the idle-time limit, a new visit is counted. The default idle-time limit is thirty minutes.

Unique Visitors - Individuals who visited your site during the report period. If someone visits more than once, they are counted only the first time they visit.

First Time Visitors - Number of visitors who had never visited your Web site before. You must use a persistent and defined cookies to get this information.

Average Visit Length - Average amount of time a visitor spent at your site within the given time frame. Visit lengths in one time frame are not compared with visit lengths in other time frame.


Visitor-Minutes - Total number of minutes your site was viewed by all visitors during the specified time frame.

Technical Statistics and Analysis

This page shows the reliability of your Web site. The table shows the total number of hits for the site, how many were successful, how many failed, and it calculates the percentage of hits that failed.

Technical Statistics and Analysis	
Total Hits	122,271
Successful Hits	111,282
Failed Hits	10,989
Failed Hits as Percent	8.98%
Redirected Hits	41,220
Redirected Hits as Percent	33.71%
Cached Hits	23,107
Cached Hits as Percent	18.89%

Technical Statistics and Analysis - Help Card

 **Cached Hits** - Hits where the page was found in the cache of the browser, so the server did not need to transfer the file.

Cached Hits as Percent - Percentage of hits that were cached compared with the total number of hits.

Redirected Hits - Number of client requests that were redirected to other resources.

Redirected Hits as Percent - Percentage of client requests that were redirected to other resources.


Failed Hits - Number of hits where a server or client error occurred.

Failed Hits as Percent - Percentage of hits where a server or client error occurred.

Hits - A hit refers to a single action on the Web server as it appears in the log file. A visitor downloading a single file is logged as a single hit, while a visitor requesting a Web page including two images registers as three hits on the server; one hit is the request for the .html page, and two additional hits are requests for the downloaded image files. While the volume of hits is an indicator of Web server traffic, it is not an accurate reflection of how many pages are being looked at.

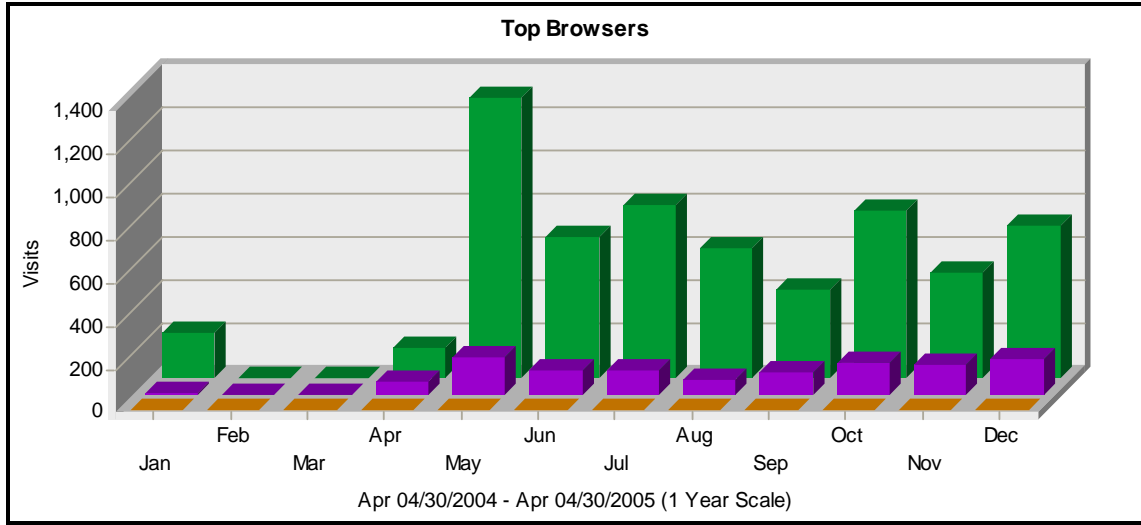
Successful Hits - Number of hits without errors. Optionally excludes redirected requests and cached hits.

Total Hits - Number of successful hits plus failed and redirected hits.

 Use this information for a bird's-eye view of the reliability of your Web site. Many major problems can be revealed here.

Top Browsers

This page identifies the most popular browsers used by visitors to your site. This information will only be displayed if your server is logging the browser/platform information.



Top Browsers

	Browser	Hits	% of Total Hits	Visits ▼
1	Microsoft Internet Explorer	98,607	88.61%	6,139
2	Netscape Navigator	12,672	11.38%	1,140
3	Others	3	0.00%	0
Total For Browsers Above		111,282	100.00%	7,279

Top Browsers - Help Card

? Browser - Identifies each browser used by visitors.

Hits - Number of hits from the specified browser. A hit is a single action on the Web server as it appears in the log file. A visitor downloading a single file is logged as a single hit, while a visitor requesting a Web page including two images registers as three hits on the server; one hit is the request for the .html page, and two additional hits are requests for the downloaded image files. While the volume of hits is an indicator of Web server traffic, it is not an accurate reflection of how many pages are being looked at.

Visits - Number of times a visitor with the specified browser came to your site. Every visit by each individual visitor is counted. If a visitor is idle longer than the idle-time limit, WebTrends assumes the visit was voluntarily terminated. If the visitor continues to browse your site after they reach the idle-time limit, a new visit is counted. The default idle-time limit is thirty minutes. This time limit can be changed by the system administrator.

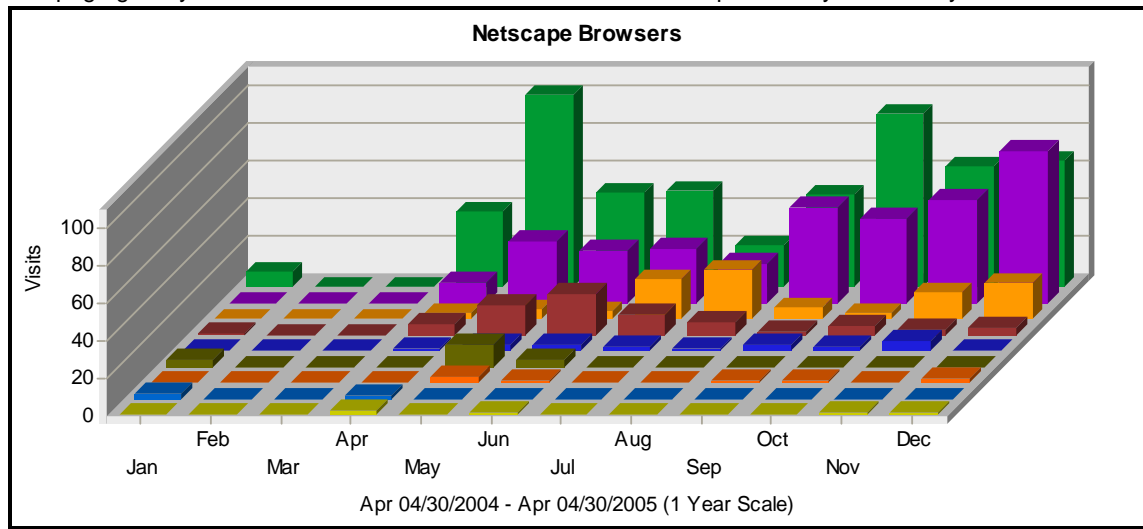
% - Percentage of total hits by visitors using the specified browser.

💡 Browser data can help you determine how to configure your site for optimal viewing.

Note: Any hits identified as originating from a spider (an automated program that searches the Internet) are not counted in this table.

Netscape Browsers

This page gives you a breakdown of the various versions of Netscape used by visitors to your site.



Netscape Browsers				
	Browser	Hits	% of Total Hits	Visits ▼
1	Netscape 7.1	6,158	48.59%	545
2	Netscape 5.0	4,015	31.68%	354
3	Netscape 7.2	943	7.44%	101
4	Netscape 7.02	912	7.19%	77
5	Netscape 7.0	148	1.16%	20
6	Netscape 6.2.2	176	1.38%	20
7	Netscape 7.01	166	1.30%	8
8	Netscape 4.7	65	0.51%	5
9	Netscape 4.73	37	0.29%	5
10	Netscape 6.2	21	0.16%	2
11	Netscape 6.2.1	24	0.18%	2
12	Netscape 4.77	7	0.05%	1
Total For Browsers Above		12,672	100.00%	1,140

Netscape Browsers - Help Card

? **Browser** - Specific version of Netscape being analyzed.

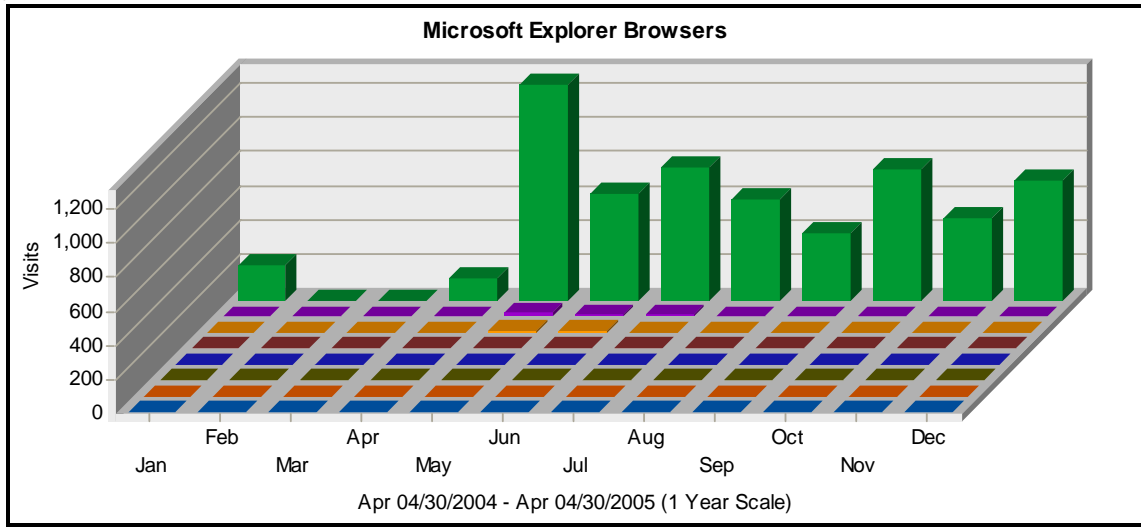
Hits - Number of hits by visitors with the specified version of Netscape. A hit refers to a single action on the Web server as it appears in the log file. A visitor downloading a single file is logged as a single hit, while a visitor requesting a Web page including two images registers as three hits on the server; one hit is the request for the .html page, and the two additional hits are requests for the downloaded image files. While the volume of hits is an indicator of Web server traffic, it is not an accurate reflection of how many pages are being looked at.

Visits - Number of visits by visitors with the specified version of Netscape. If a visitor is idle longer than the idle-time limit, WebTrends assumes the visit was voluntarily terminated. If the visitor continues to browse your site after they reach the idle-time limit, a new visit is counted. The default idle-time limit is thirty minutes. This time limit can be changed by the system administrator.

% - Percentage of hits from visitors with the specified version of Netscape.

Microsoft Explorer Browsers

This page gives you a breakdown of the various versions of Microsoft Internet Explorer used by visitors to your site.



Microsoft Explorer Browsers

	Browser	Hits	% of Total Hits	Visits ▼
1	Explorer 6.0	96,822	98.18%	5,972
2	Explorer 5.5	886	0.89%	85
3	Explorer 5.0	721	0.73%	67
4	Explorer 5.22	73	0.07%	4
5	Explorer 4.01	26	0.02%	3
6	Explorer 5.23	41	0.04%	3
7	Explorer 5.01	23	0.02%	3
8	Explorer 3.02	15	0.01%	2
Total For Browsers Above		98,607	100.00%	6,139

Microsoft Explorer Browsers - Help Card

? **Browser** - Specific version of Microsoft Internet Explorer being analyzed.

Hits - Number of hits by visitors with the specified version of Microsoft Internet Explorer. A hit refers to a single action on the Web server as it appears in the log file. A visitor downloading a single file is logged as a single hit, while a visitor requesting a Web page including two images registers as three hits on the server; one hit is the request for the .html page, and the two additional hits are requests for the downloaded image files. While the volume of hits is an indicator of Web server traffic, it is not an accurate reflection of how many pages are being looked at.

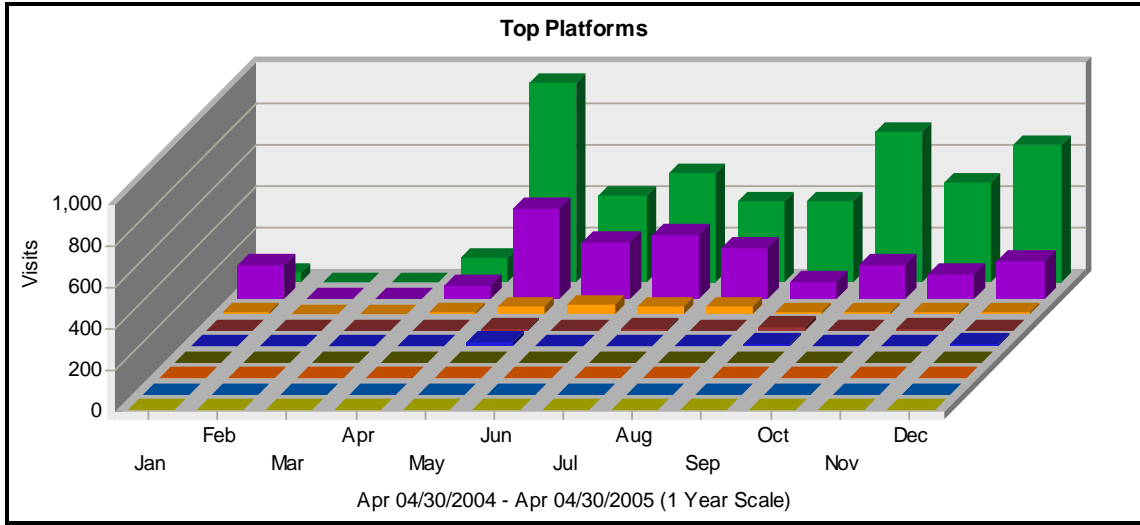
Visits - Number of visits by visitors with the specified version of Microsoft Internet Explorer. If a visitor is idle longer than the idle-time limit, WebTrends assumes the visit was voluntarily terminated. If the visitor continues to browse your site after they reach the idle-time limit, a new visit is counted. The default idle-time limit is thirty minutes. This time limit can be changed by the system administrator.

% - Percentage of hits from visitors with the specified version of Microsoft Internet Explorer.

💡 This determines which percentage of visitors use newer browser versions and whether version-specific features (such as Java Scripts) should be implemented on your site.

Top Platforms

This page identifies the operating systems most used by the visitors to the site. This information will only be displayed if your server is logging the browser/platform information.



Top Platforms				
	Platform	Hits	% of Total Hits	Visits ▼
1	Windows XP	78,822	70.83%	4,771
2	Windows 2000	27,633	24.83%	2,076
3	Windows 98	2,522	2.26%	251
4	Macintosh PowerPC	1,124	1.01%	87
5	Windows ME	970	0.87%	73
6	Windows 95	71	0.06%	10
7	Windows NT	110	0.09%	8
8	Others	21	0.01%	2
9	Linux	9	0.00%	1
Total For Platforms Above		111,282	100.00%	7,279

Top Platforms - Help Card

? **Hits** - Number of hits by visitors using the specified platform. A hit refers to a single action on the Web server as it appears in the log file. A visitor downloading a single file is logged as a single hit, while a visitor requesting a Web page including two images registers as three hits on the server; one hit is the request for the .html page, and the two additional hits are requests for the downloaded image files. While the volume of hits is an indicator of Web server traffic, it is not an accurate reflection of how many pages are being looked at.

Platform - The specified platform being analyzed. "Platform" refers to the operating system.

Visits - Number of visits by people using the specified platform. If a visitor is idle longer than the idle-time limit, WebTrends assumes the visit was voluntarily terminated. If the visitor continues to browse your site after they reach the idle-time limit, a new visit is counted. The default idle-time limit is thirty minutes. This time limit can be changed by the system administrator.

% - Percentage of hits by visitors using the specified platform.

This report was generated by

*WebTrends is a registered trademark of NetIQ Corporation.
Other trademarks are the property of their respective owners.*