

Appendix H

ILL REQUESTS BY BLAKE LIBRARY (BORROWING ACTIVITY) FY2010 DATA

	STUDENTS		FACULTY / STAFF		OTHER **		TOTAL FILLED	TOTAL CANCELLED	TOTAL UNFILLED	TOTAL REQUEST	FILL RATE
	COPIES	BOOKS	COPIES	BOOKS	COPIES	BOOKS					
JUL	2	1	1	1	2	2	9	0	0	9	100.0%
AUG	0	0	0	1	0	1	2	0	0	2	100.0%
SEP	6	1	1	0	0	0	8	0	0	8	100.0%
OCT	14	0	6	2	1	1	23	1	0	24	95.8%
NOV	16	0	2	0	1	3	21	0	1	22	95.5%
DEC	1	0	3	2	0	3	9	0	0	9	100.0%
JAN	4	0	1	1	0	1	7	0	0	7	100.0%
FEB	5	0	6	4	0	3	18	0	0	18	100.0%
MAR	3	1	7	3	0	3	16	1	0	17	94.1%
APR	19	0	2	0	0	3	23	0	1	24	95.8%
MAY	2	1	4	1	0	1	9	0	0	9	100.0%
JUN	12	0	32	0	0	1	44	1	0	45	97.8%
TOTAL	84	4	65	15	4	22	189	3	2	194	97.4%

A total of 17 ILL inquires found the items available on site. Eleven inquiries were made, then canceled at the patron's request, before data was entered.

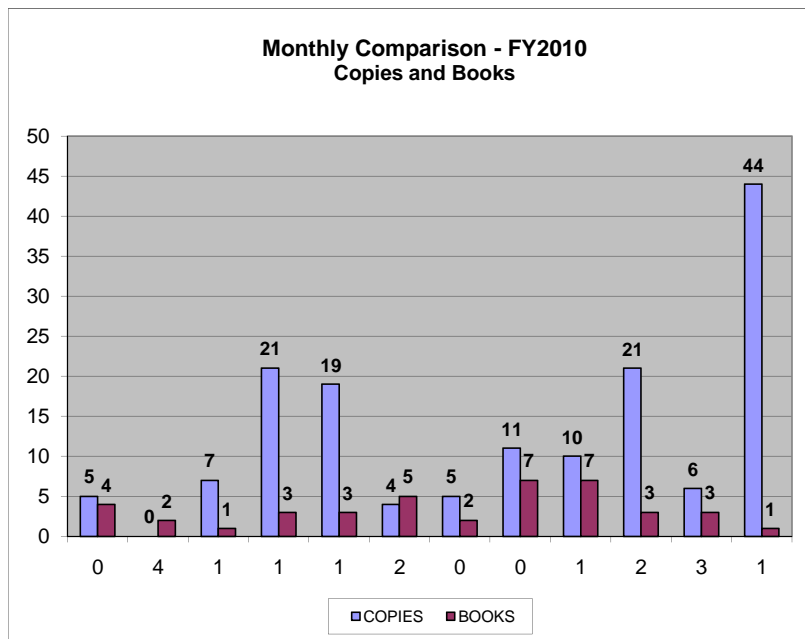
BREAKDOWN OF CANCELLED AND UNFILLED ITEMS

	CANCELLED		UNFILLED		TOTALS
	COPIES	BOOKS	COPIES	BOOKS	
JUL	0	0	0	0	0
AUG	0	0	0	0	0
SEP	0	0	0	0	0
OCT	1	0	0	0	1
NOV	0	0	1	0	1
DEC	0	0	0	0	0
JAN	0	0	0	0	0
FEB	0	0	0	0	0
MAR	0	1	0	0	1
APR	0	0	1	0	1
MAY	0	0	0	0	0
JUN	1	0	0	0	1
TOTAL	2	1	2	0	5

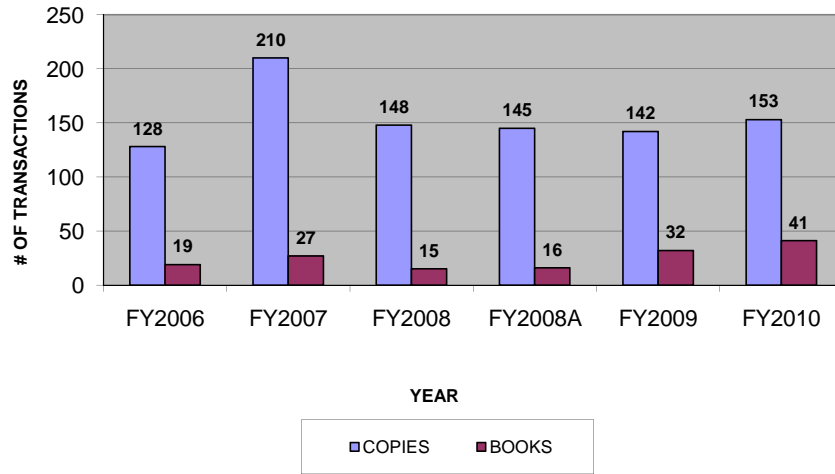
Annual Comparison of Interlibrary Loan Borrowing Activity

(total requests)

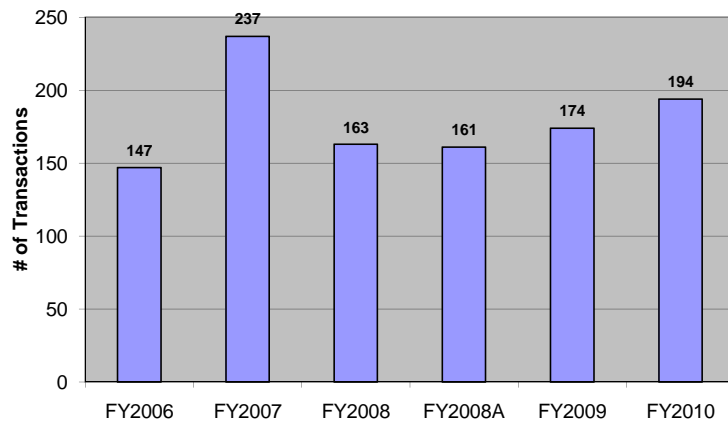
	FY2006		FY2007		FY2008		FY2008A		July 07 - June 08		FY2009		FY2010	
	COPIES BOOKS		COPIES BOOKS		COPIES BOOKS		COPIES BOOKS		COPIES BOOKS		COPIES BOOKS		COPIES BOOKS	
	COPIES	BOOKS	COPIES	BOOKS	COPIES	BOOKS	COPIES	BOOKS	COPIES	BOOKS	COPIES	BOOKS	COPIES	BOOKS
MAY	1	2	23	0	8	2	JUL	11	0	8	3	5	4	
JUN	3	0	20	3	7	1	AUG	9	4	4	1	0	2	
JUL	2	0	5	8	11	0	SEP	21	1	1	0	7	1	
AUG	10	6	5	2	9	4	OCT	33	1	28	1	21	3	
SEP	7	0	10	3	21	1	NOV	11	1	10	2	19	3	
OCT	18	1	17	0	33	1	DEC	10	2	4	3	4	5	
NOV	10	2	21	3	11	1	JAN	5	0	1	4	5	2	
DEC	6	2	5	0	10	2	FEB	4	0	18	3	11	7	
JAN	10	1	24	1	5	0	MAR	14	1	13	4	10	7	
FEB	32	0	28	0	4	0	APR	15	2	15	3	21	3	
MAR	25	2	34	3	14	1	MAY	7	3	11	4	6	3	
APR	4	3	18	4	15	2	JUNE	5	1	29	4	44	1	
TOTAL	128	19	210	27	148	15		145	16	142	32	153	41	
TOTAL ALL	147		237		163		161		174		194			



**ILL BORROWING ACTIVITY
FIVE YEAR COMPARISON**



Annual Comparison of Copies and Books Combined

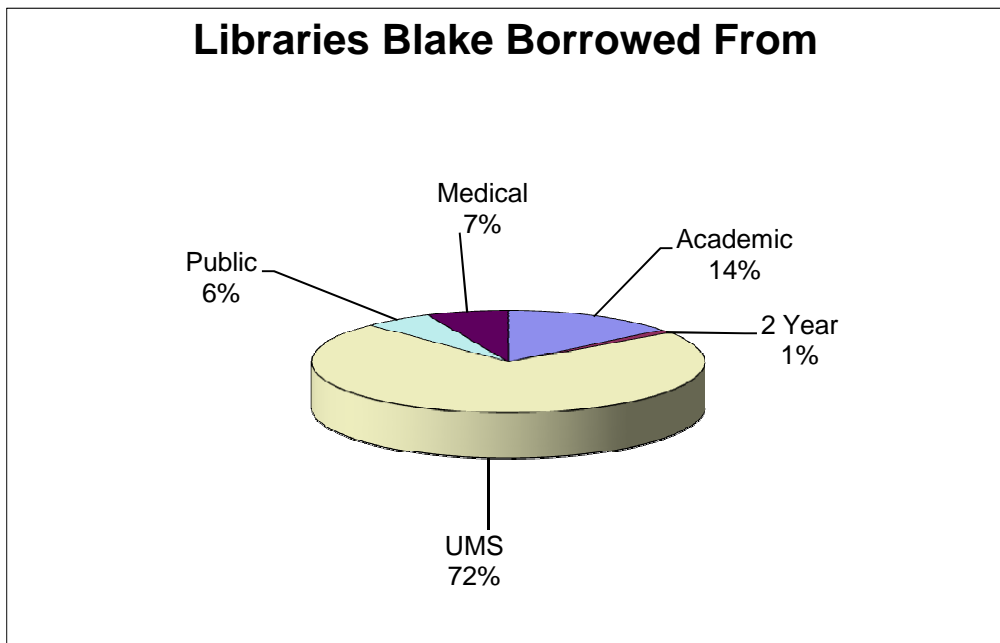


LIBRARIES BLAKE BORROWED FROM - FY2010

by Library Type

(Total requests although some were unfilled)

	# of Requests	# of Libraries	% of Requests	% of Libraries
Academic	28	12	14.43%	33.33%
2 Year	2	1	1.03%	2.78%
UMS	140	7	72.16%	19.44%
Public	11	8	5.67%	22.22%
Medical	13	8	6.70%	22.22%
Special	0	0	0.00%	0.00%
TOTAL	194	36	100.00%	100.00%



PERIODICALS BLAKE BORROWED FY2010

SUBJECT	# PERIODICALS	# ARTICLES	% PERIODICALS	% ARTICLES
EDUCATION	15	19	16.67%	12.42%
HUMANITIES	0	0	0.00%	0.00%
MATH/SCIENCE	12	14	13.33%	9.15%
BUSINESS	0	0	0.00%	0.00%
NURSING	58	102	64.44%	66.67%
SOCIAL SCIENCE	5	18	5.56%	11.76%
TOTAL	90	153	100.00%	100.00%

The article total represents the total number articles filled, but does not include microfilm/fiche

